

Архангельск (8182)63-90-72  
Астана (7172)727-132  
Астрахань (8512)99-46-04  
Барнаул (3852)73-04-60  
Белгород (4722)40-23-64  
Брянск (4832)59-03-52  
Владивосток (423)249-28-31  
Волгоград (844)278-03-48  
Вологда (8172)26-41-59  
Воронеж (473)204-51-73  
Екатеринбург (343)384-55-89  
Иваново (4932)77-34-06

Ижевск (3412)26-03-58  
Иркутск (395)279-98-46  
Казань (843)206-01-48  
Калининград (4012)72-03-81  
Калуга (4842)92-23-67  
Кемерово (3842)65-04-62  
Киров (8332)68-02-04  
Краснодар (861)203-40-90  
Красноярск (391)204-63-61  
Курск (4712)77-13-04  
Липецк (4742)52-20-81  
Киргизия (996)312-96-26-47

Магнитогорск (3519)55-03-13  
Москва (495)268-04-70  
Мурманск (8152)59-64-93  
Набережные Челны (8552)20-53-41  
Нижний Новгород (831)429-08-12  
Новокузнецк (3843)20-46-81  
Новосибирск (383)227-86-73  
Омск (3812)21-46-40  
Орел (4862)44-53-42  
Оренбург (3532)37-68-04  
Пенза (8412)22-31-16  
Казахстан (772)734-952-31

Пермь (342)205-81-47  
Ростов-на-Дону (863)308-18-15  
Рязань (4912)46-61-64  
Самара (846)206-03-16  
Санкт-Петербург (812)309-46-40  
Саратов (845)249-38-78  
Севастополь (8692)22-31-93  
Симферополь (3652)67-13-56  
Смоленск (4812)29-41-54  
Сочи (862)225-72-31  
Ставрополь (8652)20-65-13

Сургут (3462)77-98-35  
Тверь (4822)63-31-35  
Томск (3822)98-41-53  
Тула (4872)74-02-29  
Тюмень (3452)66-21-18  
Ульяновск (8422)24-23-59  
Уфа (347)229-48-12  
Хабаровск (4212)92-98-04  
Челябинск (351)202-03-61  
Череповец (8202)49-02-64  
Ярославль (4852)69-52-93

<https://ibg.nt-rt.ru/> || [bfg@nt-rt.ru](mailto:bfg@nt-rt.ru)

## THE HARMONY OF PIPES, FITTINGS AND VALVES

DESIGNED  
ENGINEERED &  
MADE IN AUSTRIA



1. perfect tolerances acc. ISO 727/DIN8063
2. producer, material, dimension, pressure rate
3. indication of socket length on the PVC pipe
4. production date
5. brand IBG
6. 90°/45° marking for installation

**IBG**

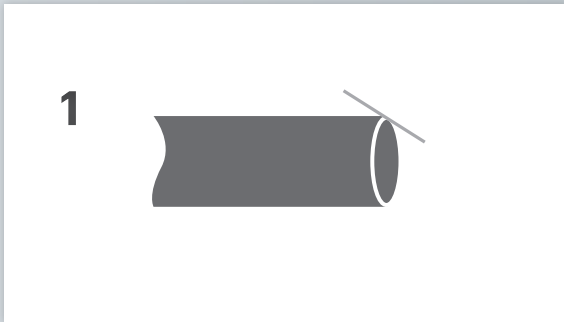
### PIPES & FITTINGS – WELLNESS FOR THE POOL WATER

The globally known and world-valued IBG® pipes and fittings are produced with smallest possible tolerances and match in a perfect way. The exactly processed plastic material PVC-U (polyvinyl chloride without plasticizer), is particularly suitable for demanding and custom-fit piping systems. Peraqua works exclusively with raw material from certified manufacturers/suppliers. This raw material is tested ongoing, also by external authorities.

The advantages of IBG® PVC-U pipes are obvious :

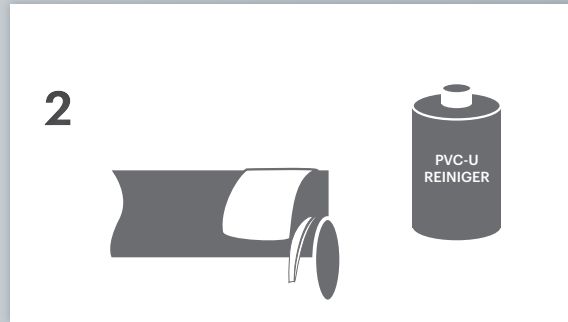
- » excellent chemical resistance, easy installation (also due to the low weight of the material)
- » easy installation with special pipe clamps (type A, B and C)
- » best suitability for the swimming pool industry for different joining techniques (gluing, thread, flange,...) in many shapes and dimensions
- » Guaranteed lasting and secure connections (average lifetime up to 50 years)
- » Optimal price-performance ratio
- » Praher PVC pipe systems and fittings match perfectly in order to reduce the handling time

## INSTRUCTION FOR CORRECT INSTALLATION OF IBG® PVC-U PIPING SYSTEMS



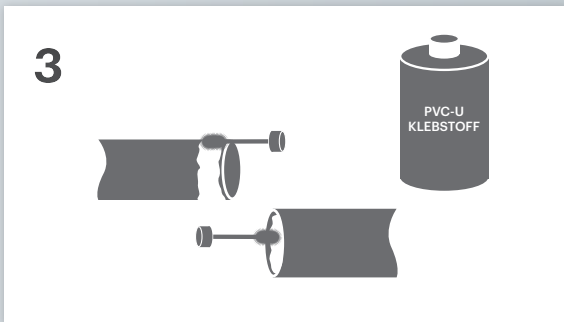
### 1 PREPARING

Chamfering and deburring of the pipe end with the cutter. Gluing only to be done at temperatures more than 8°C. At the temperature of approx. 8°C the pipe end has to be tempered to handwarm condition.



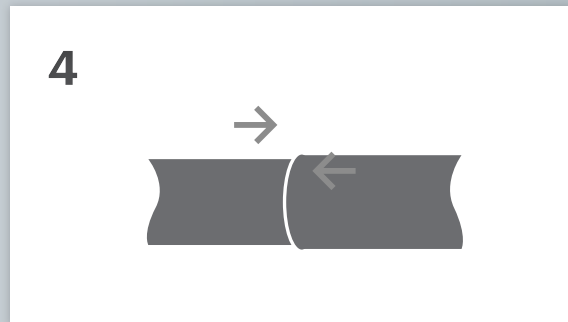
### 2 CLEANING

For optimal adhesion, the surfaces have to be dry and free from dirt. Additional cleaning of the pipe end on the outside and inside with waterleaf paper and cleaner.



### 3 APPLYING SOLVENT

Stir the solvent and apply the brush with the solvent substantially. Apply a thin film of the solvent on the inner side of the socket axial (from inner part to the outer part). Please also apply enough solvent on the end of the pipe (also axial, press the brush). Drying time depends from the temperature and quantity of solvent (4 min./20°C up to <1 in./ 40°C).



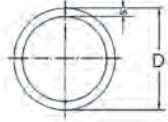
### 4 CONNECTING

Instantly push the pipe in the socket without torsion or twist. Fix the connection till the glue is adhering. From DN 150 pipe dimension please use a suitable tool for pushing pipe. Remove the excess glue with waterleaf paper.



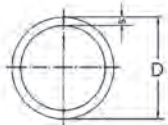
**CAUTION!**  
CONSIDER DRYING TIME

Move the pipes earliest 5 min. after the gluing process, at a temperature under +10°C the time minimum 15min after the gluing process. Lowering of the pipes after 10 – 12 hours. Filling of the piping system and pressure test up to a test pressure of 1,5 x PN earliest after 24 hours after the last glueing process. In case the piping has to be loaded with operation pressure (reparation) please stick to the rule: per 1 bar operation pressure 1 hour time to wait. Pipes which are not in immediate operation have to be rinsed or left filled with water.



## IBG® PVC-u pipe special types, grey with socket 5m, PN10

DxS	PN	l (m)	PM	G-kg	PU	Prod.No.
32x1,6	10	5	1440	0.24	5.00	76926
40x1,9	10	5	895	0.35	5.00	76927
50x2,4	10	5	1130	0.57	5.00	76928
63x3,0	10	5	720	0.90	5.00	76929
75x3,6	10	5	340	1.25	5.00	76930
90x4,3	10	5	275	1.79	5.00	76931
110x4,2	10	5	360	2.16	5.00	76932
125x4,8	10	5	340	2.81	5.00	76933
140x5,4	10	5	265	3.54	5.00	76934
160x6,2	10	5	165	4.64	5.00	76935
180x6,9	10	5	140	5.82	5.00	76936
200x7,7	10	5	100	7.21	5.00	76937
225x8,6	10	5	90	9.06	5.00	76938
250x9,6	10	5	60	11.24	5.00	76939
280x10,7	10	5	55	14.03	5.00	76940
315x12,1	10	5	45	17.84	5.00	76941
355x13,6	10	5	5	22.61	5.00	76942
400x15,3	10	5	5	28.66	5.00	76943



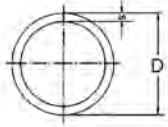
## IBG® PVC-u pipe special types, grey with socket, 3m, PN10

DxS	PN	l (m)	PM	G-kg	PU	Prod.No.
40x1,9	10	3	825	0.37	3.00	77007
50x2,4	10	3	645	0.51	3.00	77008
63x3,0	10	3	369	0.80	3.00	77009
75x3,6	10	3	261	1.15	3.00	77010
90x4,3	10	3	396	1.79	360.00	77011
110x4,2	10	3	258	2.20	3.00	77012



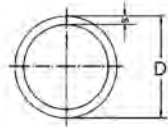
## IBG® PVC-u pipe special types, grey without socket, 2m, PN10

DxS	PN	l (m)	PM	G-kg	PU	Prod.No.
50x2,4	10	2	500	0.11	2.00	77769
63x3,0	10	2	300	0.88	10.00	73526



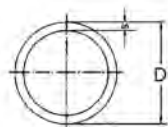
### IBG® PVC-u pipe special types, grey, 5m, PN16

DxS	PN	l (m)	PM	G-kg	PU	Prod.No.
20x1,5	16	5	4380	0.14	5.00	76944
25x1,9	16	5	2230	0.21	5.00	76945
32x2,4	16	5	1440	0.35	5.00	76946
40x3,0	16	5	895	0.54	5.00	76947
50x3,7	16	5	615	0.84	5.00	76948
63x4,7	16	5	720	1.34	5.00	76949
75x5,6	16	5	340	1.89	5.00	76950
90x6,7	16	5	275	2.72	5.00	76951
110x6,6	16	5	360	3.32	5.00	76952
125x7,4	16	5	340	4.24	5.00	76953
140x8,3	16	5	265	5.32	5.00	76954
160x9,5	16	5	165	6.96	5.00	76955
180x10,7	16	5	140	8.82	5.00	76956
200x11,9	16	5	100	10.90	5.00	76957
225x13,4	16	5	90	13.81	5.00	76958
250x14,8	16	5	60	16.95	5.00	76959
280x16,6	16	5	55	21.29	5.00	76960
315x18,7	16	5	45	26.98	5.00	76961



### IBG® PVC-u pipe special types, grey with socket, 5m, PN6

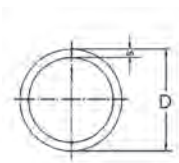
DxS	PN	l (m)	PM	G-kg	PU	Prod.No.
40x1,5	6	5	690	0.28	5.00	76909
50x1,6	6	5	430	0.38	5.00	76910
63x2,0	6	5	720	0.57	5.00	76911
75x2,3	6	5	340	0.81	5.00	76912
90x2,8	6	5	275	1.19	5.00	76913
110x2,7	6	5	360	1.41	5.00	76914
125x3,1	6	5	240	1.84	5.00	76915
140x3,5	6	5	265	2.33	5.00	76916
160x4,0	6	5	150	3.04	5.00	76917
180x4,4	6	5	140	3.76	5.00	76918
200x4,9	6	5	100	4.65	5.00	76919
225x5,5	6	5	90	5.88	5.00	76920
250x6,2	6	5	60	7.36	5.00	76921
280x6,9	6	5	55	9.17	5.00	76922
315x7,7	6	5	45	11.52	5.00	76923
355x8,7	6	5	5	14.67	5.00	76924
400x9,8	6	5	5	18.62	5.00	76925



### IBG® PVC-u pipe special types, black with socket, 5m, PN10

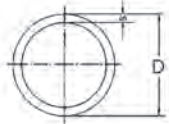
For use as supply and waste pipe in solar systems, conditional UV-resistance

DxS	PN	l (m)	PM	G-kg	PU	Prod.No.
	10	5	1130	0.56	5.00	74260



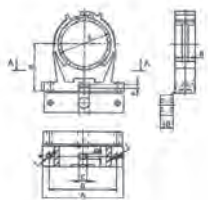
### IBG® PVC-u pipe special types, white without socket, 5m, PN10

DxS	PN	l (m)	PM	G-kg	PU	Prod.No.
50x2,4	10	5	1130	0.51	20.00	76674



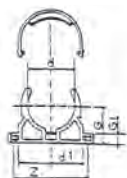
### IBG® PVC-u pipe special types, transparent without socket, 5m, PN16/10

DxS	PN	l (m)	PM	G-kg	PU	Prod.No.
20x1,5	16	5	25	0.14	5.00	75828
25x1,9	16	5	25	0.21	5.00	73714
32x2,4	16	5	20	0.34	5.00	73715
40x3	16	5	20	0.53	5.00	73716
50x3,7	16	5	20	0.81	5.00	73717
63x4,7	16	5	15	1.29	5.00	73718
50x2,4	10	5	20	0.90	5.00	74261
63x3,0	10	5	15	1.22	5.00	74262
75x3,6	10	5	15	1.80	5.00	76211
90x4,3	10	5	10	1.75	5.00	76212
110x5,3	10	5	5	2.90	5.00	76213



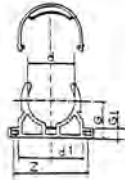
### IBG® pipe clip for plastic pipe Type B

d	D	E	F	G	I	G-kg	PU	Prod.No.
16 - 19mm	4,3	11	3,5	x	x	0.01	100.00	150149
20 - 23mm	6,5	11	3,5	41	6,5	0.01	500.00	150271
25 - 28mm	6,5	11	3,5	46	6,5	0.01	500.00	150272
31 - 35mm	6,5	11	3,5	52	6,5	0.02	500.00	150240
39 - 43mm	6,5	11	3,5	64	6,5	0.03	500.00	150293
47 - 51mm	6,5	11	3,5	70	6,5	0.03	500.00	150238
60 - 65mm	6,5	11	3,5	80	6,5	0.05	300.00	150239
72 - 80mm	8,5	14	4,3	106	8,5	0.08	200.00	150291
87 - 95mm	8,5	14	4,3	117	8,5	0.10	150.00	150292



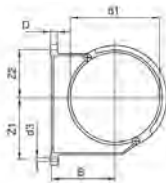
### IBG® pipe clip for plastic pipe Type C (d25–d90)

d	Z	Z1	G	Breite mm	G-kg	PU	Prod.No.
25	35	41	27,5	15,5	0.00	250.00	71069
32	44,5	50,5	30,5	15,5	0.00	150.00	71070
40	55,5	61,5	34,5	19,5	0.02	250.00	71071
50	68,5	74,5	41,5	22,5	0.03	100.00	71072
63	85	94	50	23,5	0.06	80.00	71073
75	101	110	58	25,5	0.07	60.00	71074
90	120	129	68	25,5	0.11	60.00	71075



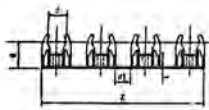
### IBG® pipe clip for plastic pipe Type C (d110–d225)

d	d1	Z	G	G1	Width mm	G-kg	PU	Prod.No.
110	167	189	80	17	26,6	0.15	80.00	70184
125	185	207	105	35	28	0.21	60.00	70185
140	204	226	114	35	28,5	0.25	30.00	70186
160	228	250	124	35	30	0.32	30.00	70187
200	287	311	158	48	34	0.64	20.00	70188
225	325	344	170,5	48	34	0.72	15.00	70189



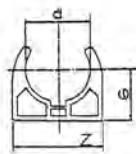
### IBG® pipe clip for plastic pipe Type D

d	d3	Z1	Z2	B	D	Width mm	B-kg	VE	Prod.No.
90	9	89	71	105	15	33	0.19	60.00	72170
110	9	94	79,5	115	15	33	0.20	40.00	72171
125	11	115,5	91	130	20	35	0.33	40.00	72172
140	11	120,5	97,5	130	20	35	0.34	40.00	72173
160	11	130,5	106,5	147,5	20	35	0.39	20.00	72174
200	13	151,5	119,5	175	25	35	0.66	10.00	72175
225	13	164,5	131,5	175	25	40	0.68	10.00	72176
250	13	182,5	142,5	200	25	40	0.79	10.00	71076
280	13	197,5	155,5	200	25	40	0.83	2.00	71077
315	13	218,5	171,5	225	25	40	0.96	10.00	71078
355	17	275	208,5	257,5	30	50	1.47	10.00	72177
400	17	300	228	287,5	30	50	1.70	10.00	72178



### IBG® pipe clip for plastic pipe Type AA

d	d1	Z	G	Width mm	G-kg	PU	Prod.No.
10	3,1	93	14,5	10	0.03	800.00	70238
12	4,2	105	17	12	0.00	800.00	70239



### IBG® pipe clip for plastic pipe Type A

d	Z	G	Breite mm	G-kg	PU	Prod.No.
160x	25	23	15,5	0.00	500.00	71065
20	30	25	15,5	0.01	400.00	71066
25	35	27	15,5	0.01	300.00	71067
32	44,5	30	15,5	0.01	200.00	71068

**PIPE CLIP PP**  
FOR PVC/PP/PVDF/PE PIPES

**DIMENSIONS**  
**MATERIAL: PP**



Type A:  
d10 – d32



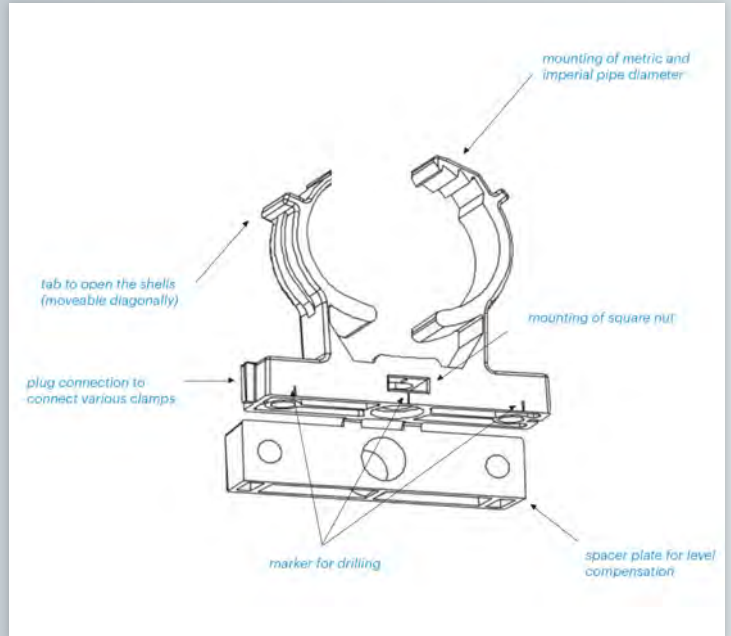
Type B:  
d16 –d19 to d39-43  
ANSI / ASTM / DIN / JIS /  
SCH80 pipes



Type C:  
d25 – d225

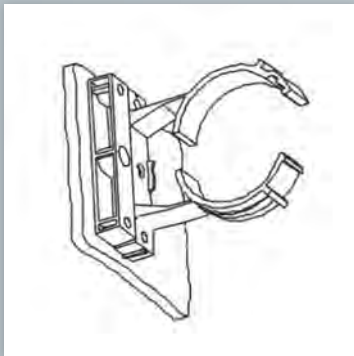


Type D:  
d90 – d400



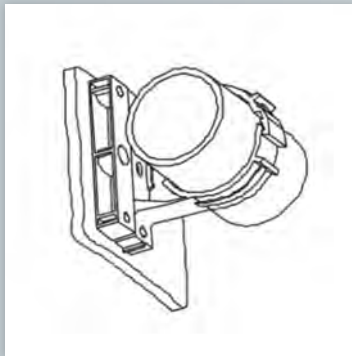
**INSTALLATION MANUAL - TYP B**

1

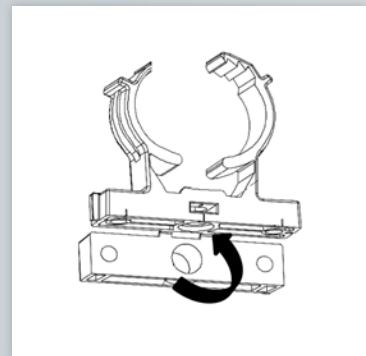


Fix the pipe clip with dowel and screw onto the wall

2



Press the pipe against the wall – ready



**BALL VALVE INSTALLATION**

Remove the spacer, fix both parts with screws (100 mm longer), fixing of both sides of the valve

## PIPE CLAMP FOR CORRECT DISTANCE OF HORIZONTALLY INSTALLED PN 10 AND PN 16 PIPES

Distance in cm

D MM	20 °C	30 °C	40 °C	50 °C	60 °C
16	80	70	50		
20	90	80	60		
25	95	85	65	55	40
32	105	90	70	60	45
40	120	110	90	70	55
50	140	130	110	85	65
63	150	140	120	95	70
75	165	155	135	110	80
90	180	170	150	125	95
110	200	190	170	145	115
125	210	200	185	160	125
140	225	215	195	170	140
160	240	230	210	185	155
200	255	240	225	200	170
225	270	260	240	215	185

The recommended clamp distances refer to the max. bending of the pipe between clamps of 2.5 mm in case of medium density of 1 g/cm<sup>3</sup>.

The distance of the clamps is related to the factors: material, diameter and thickness of the pipe wall, average pipe wall temperature, density of the medium.

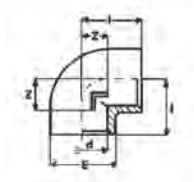
The clamp distance for vertical installed pipes can be extended by 30%. For mediums with a density of more than 1 g/cm<sup>3</sup> the clamp distances have to be reduced according to following instruction.



## IBG® elbow 90° solvent socket, grey

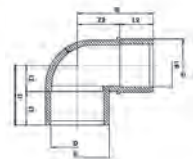


d	PN	DN	I	Z	E	G-kg	PU	Prod.No.
10	16	6	18	6	14	0.01	250.00	70650
12	16	8	17	7,6	19	0.01	150.00	70651
16	16	10	23	9	23	0.01	250.00	70652
20	16	15	28	11	28	0.02	140.00	70653
25	16	20	33	13,5	34,5	0.03	100.00	70654
32	16	25	39	17	42,5	0.05	100.00	70655
40	16	32	47	21	50,5	0.09	50.00	70656
50	16	40	57	26	62	0.16	40.00	70506
63	16	50	71,5	32,5	76	0.25	35.00	70507
75	16	65	82,5	38,5	92	0.50	30.00	70659
90	16	80	97	46	110	0.80	10.00	70574
110	16	100	117	56	136	1.29	8.00	70575
125	10	65	85	40,3	86	1.85	6.00	71398
140	10	80	98	46	102	2.47	4.00	70578
160	10	100	120	56	126	3.63	4.00	70579
32	16	110	132	64	151	0.04	100.00	70906
40	16	125	147	71	168	0.07	50.00	70905
75	16	150	167	81	192	0.31	30.00	73762
90	10	25	39	17	40	0.47	10.00	73763
110	10	32	47	21	49	0.89	8.00	73764
200	10	175	213	106	230	5.73	1.00	70664
225	10	200	238	118	258	7.80	1.00	70577
250	10	250	264	133	283	10.39	1.00	71032
280	10	250	357	210	321	16.90	1.00	70576
280	6	250	295	149	321	14.30	1.00	71034
315	10	250	357	210	321	22.69	1.00	71035
315	6	300	322	158	360	17.50	1.00	71036
400	6	370	521	300	442	37.95	1.00	72057



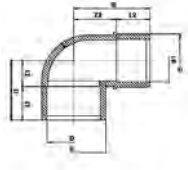
## IBG® elbow 90° solvent socket, black (for solar systems), PN10

d	PN	DN	I	Z	E	G-kg	PU	Prod.No.
50	10	40	57	26	60	0.13	40.00	70129



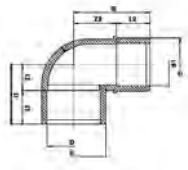
## IBG® reduced elbow 90° solvent socket / solvent spigot, grey, PN16

d-D-d1	PN	DN	L	Z	L1	E	H	G-kg	PU	Prod.No.
50-50/40	16	40	62	29	67,5	62	88	0.13	40.00	71317
63-63/50	16	50	74	37,5	82	77	104	0.28	35.00	71318



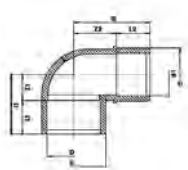
**IBG® reduced elbow 90° solvent socket / solvent spigot, black (for solar systems), PN16**

d-D-d1	PN	DN	L	Z	L1	E	H	G-kg	PU	Prod.No.
50-50/40	16	40	62	29	67,5	62	88	0.13	40.00	74264



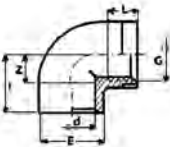
**IBG® reduced elbow 90° solvent socket / solvent spigot, white, PN16**

d-D-d1	PN	DN	L	Z	L1	E	H	G-kg	PU	Prod.No.
50-50/40	16	40	62	29	67,5	62	88	0.13	40.00	76645



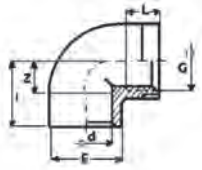
**IBG® reduced elbow 90° solvent socket / solvent spigot, white (whirlpool), PN16**

d-D-d1	PN	DN	L	Z	L1	E	H	G-kg	PU	Prod.No.
20 × 20	16	15	16	10	30	28	40	0.08	100.00	75853
32 × 32	16	25	22	17	39	42	58	0.10	100.00	75854



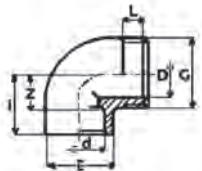
**IBG® elbow 90° solvent socket / female thread, reinforced, PN10**

d-G	PN	DN	L	L1	Z	E	G-kg	PU	Prod.No.
16 - 3/8"	23	10	12	9	25	16	0.02	50.00	70816
20 - 1/2"	28	10	12	12	30	16	0.03	140.00	70817
25 - 3/4"	33	10	16	15	34,5	16	0.04	100.00	70818
32 - 1"	39	10	19,1	17	42	16	0.07	100.00	70819
40 - 1 1/4"	47	10	22	22,4	50,6	16	0.11	50.00	70820
50 - 1 1/2"	57	10	21,4	26	62	16	0.19	40.00	70821
63 - 2"	71,5	10	25,7	32	77	16	0.31	35.00	70822
75 - 2 1/2"	83	10	36	39	88	10	0.53	30.00	70823
90 - 3"	97	10	39	46	105	10	0.87	10.00	70824
110 - 4"	117	10	39	56	130	10	1.40	8.00	70825



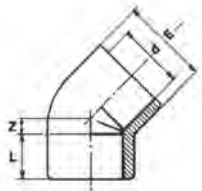
### IBG® elbow 90° solvent socket / female thread, PN10, grey

d-G	PN	DN	L	L1	Z	E	G-kg	PU	Prod.No.
10-1/4"	10	6	9	9	7	14	0.01	150.00	72225
12-1/4"	10	8	9	9	7	16	0.01	150.00	72226
16-3/8"	10	10	14	14	11	23	0.01	200.00	71132
20-1/2"	10	15	14	14	11	28	0.02	50.00	71133
25-3/4"	10	20	18	18	15	34,5	0.03	30.00	71134
32-1"	10	25	22	19,1	17	42	0.15	40.00	71135
40-1 1/4"	10	32	26	21,4	22,3	50,6	0.14	20.00	71136
50-1 1/2"	10	40	31	21,4	26	62	0.17	20.00	71137
63-2"	10	50	38	25,7	32	77	0.29	35.00	71138



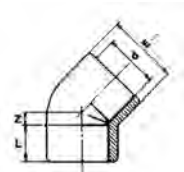
### IBG® elbow 90° solvent socket / male thread, PN10, grey

d-G	PN	DN	D	I	L	Z	E	G-kg	PU	Prod.No.
32 - 1 1/4"	10	25	32	42	19,1	17	40,2	0.05	15.00	71221
40 - 1 1/4"	10	32	31,8	47	21,4	21	50	0.07	50.00	71222
50 - 1 1/4"	10	40	31,8	57	21,4	26	62	0.12	40.00	71223
50 - 1 1/2"	10	40	38	57	21,4	26	62	0.11	40.00	70883
50 - 2"	10	40	49,5	57	24,5	26	62	0.14	40.00	71224



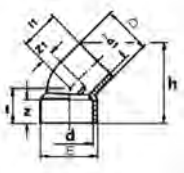
### IBG® elbow 45° solvent socket, grey

d	PN	DN	I	Z	E	G-kg	PU	Prod.No.
10	16	6	12	3	16	0.01	150.00	70666
12	16	8	12	3,9	18	0.01	160.00	70667
16	16	10	14	4,5	23	0.01	140.00	70668
20	16	15	16	5	27,5	0.02	180.00	70669
25	16	20	18,5	6	34	0.03	120.00	70670
32	16	25	22	7,5	43	0.05	130.00	70671
40	16	32	26	9,5	52,5	0.09	80.00	70672
50	16	40	31	11,5	62	0.13	50.00	70673
63	16	50	37,5	14	77	0.23	45.00	70674
75	16	65	43,5	16,5	90,5	0.35	40.00	70675
90	16	80	51	19,5	110,5	0.64	20.00	70676
110	16	100	61	23,5	131	0.96	9.00	70677
125	16	110	69	26,5	151	1.46	6.00	71037
140	16	125	76	30	174	1.73	6.00	70678
160	16	150	86	34	188	3.15	4.00	70679
200	10	175	107	49	230	4.42	1.00	70680
225	10	200	120	54	260	6.10	1.00	70580
250	10	250	132	58	286	7.97	1.00	71038
280	10	250	147	62	321	11.39	1.00	71039
280	6	250	146	62	321	7.50	1.00	71040
315	10	300	165	66	360	15.53	1.00	71041
315	6	300	164	68	355	13.60	1.00	71042
400	6	370	208	93,5	442	25.06	1.00	72058



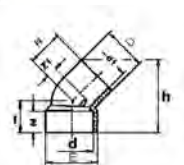
### IBG® elbow 45° solvent socket, black (for solar systems), PN10

d	PN	DN	I	Z	E	G-kg	PU	Prod.No.
50	10	40	31	11,5	59	0.10	50.00	70130



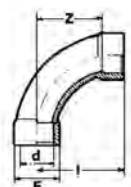
### IBG® reduced elbow 45° solvent socket, grey, PN10

d-D-d1	PN	DN	L	Z	L1	E	H	G-kg	PU	Prod.No.
50-50/40	10	40	44	29	47	62	94	0.11	40.00	71315
63-63/50	10	50	51,5	37,5	58	77	115	0.20	40.00	71316



### IBG® Reduzierknie 45° solvent socket, white (for whirlpools), PN16

d-D-d1	PN	DN	L	Z	L1	E	H	G-kg	PU	Prod.No.
20-x/20	16	15	17/23	5	22,5	28	48	0.03	10.00	75998
32-x/32	16	25	22	8	31	42	64	0.03	10.00	75999



### IBG® bend 90° solvent socket, PN16, grey

d	PN	DN	I	Z	E	G-kg	PU	Prod.No.
16	16	10	46	32	23	0.01	50.00	71030
20	16	15	56	40	27	0.03	120.00	70984
25	16	20	69	50	35	0.04	100.00	70985
32	16	25	86	64	40	0.08	50.00	70986
40	16	32	106	80	49	0.14	30.00	70978
50	16	40	131	100	62	0.26	60.00	70979
63	16	50	164	126	76	0.49	30.00	70980
75	16	65	190	149	94	0.50	14.00	70981
90	16	80	231	180	112	0.80	6.00	70982a
110	16	100	283	222	137	2.75	4.00	70983
140	16	125	355	280	167	5.08	2.00	71031
160	16	150	410	319	190	7.60	2.00	70987



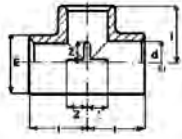
### IBG® bend 90° made of PVC pipe, grey

d	OPR bar	DN	B	Z	G-kg	PU	Prod.No.
32	16	25	25	60	0.07	50.00	71319
40	16	32	30	76	0.12	30.00	71320
50	16	40	35	92	0.21	80.00	71321
63	16	50	43	102	0.39	45.00	71322
75	16	65	51	118	0.56	25.00	71323
90	16	80	58	142	0.98	5.00	71324
110	10	100	70	175	1.35	4.00	71325
125	10	110	79	200	2.03	1.00	71326
140	10	125	87	236	3.24	1.00	71327
160	10	150	99	260	4.19	1.00	71328
200	10	175	122	330	7.73	1.00	71329
225	10	200	137	380	9.93	1.00	71330
250	10	250	151	390	13.63	1.00	71331
280	10	250	168	480	18.91	1.00	71332
315	6	300	188	625	31.23	1.00	71333
400	6	370	250	1100	35.00	1.00	71334



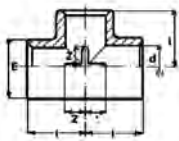
### IBG® bend 45° solvent socket, made of PVC pipe, grey

d	OPR bar	DN	B	Z	G-kg	PU	Prod.No.
32	16	25	25	26	0.05	30.00	71335
40	16	32	30	36	0.09	20.00	71336
50	16	40	35	40	0.16	20.00	71337
63	16	50	43	46	0.28	10.00	71338
75	16	63	51	54	0.41	10.00	71339
90	16	80	58	63	0.74	10.00	71340
110	10	100	70	80	0.96	5.00	71341
125	10	110	79	89	1.50	1.00	71342
140	10	125	87	98	2.29	1.00	71343
160	10	140	99	119	3.33	1.00	71344
200	10	175	122	143	5.62	1.00	71345
225	10	200	137	166	7.27	1.00	71346
250	10	250	150	170	10.08	1.00	71347
280	10	250	168	214	13.65	1.00	71348
315	6	300	188	236	19.61	1.00	71349
400	6	370	250	550	35.00	1.00	71350



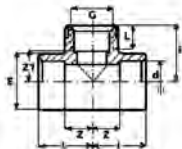
### IBG® Tee 90°, grey

d	PN	DN	I	Z	E	G-kg	PU	Prod.No.
10	16	6	18	6	14	0.01	250.00	70689
12	16	8	19,6	7,6	18	0.01	250.00	70690
16	16	10	24	9	23,2	0.02	140.00	70691
20	16	15	27,5	11	28	0.03	100.00	70692
25	16	20	32,9	13,5	34,6	0.04	70.00	70693
32	16	25	40,5	17	42	0.08	100.00	70694
40	16	32	48,9	21,6	51	0.12	50.00	70695
50	16	40	59,3	26	62,4	0.22	30.00	70022
63	16	50	71	32,5	78	0.38	30.00	72632
75	16	65	83,5	38,5	93	0.65	25.00	70696
90	16	80	99	46	112	1.14	18.00	70697
110	16	100	117	56	132	1.98	10.00	70581
125	16	110	133	63	150	2.39	4.00	71043
140	16	125	147	71	171	3.64	5.00	70642
160	16	150	167	81	192	5.45	4.00	70583
32	10	25	40,5	17	40	0.05	100.00	70897
40	10	32	48,9	21,6	49	0.10	50.00	70896
75	10	65	85	41	86	0.43	24.00	73766
90	10	80	117	49	102	0.80	14.00	73767
110	10	100	122	58	126	1.30	7.00	73768
200	10	175	213	106	232	8.00	1.00	70700
225	10	200	284	118	258	5.50	1.00	70584
250	10	250	261	132	284	14.28	1.00	71044
280	10	250	291	144	320	19.89	1.00	71045
280	6	250	290	144	320	7.00	1.00	71046
315	10	300	327	162	360	27.18	1.00	71047
315	6	300	326	162	355	24.10	1.00	71048
400	6	370	421	213	442	41.91	1.00	72059



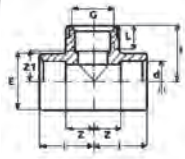
### IBG® Tee90°, black (for solar systems), PN10

d	PN	DN	I	Z	E	G-kg	PU	Prod.No.
50	10	40	59,3	26	60	0.16	30.00	70893



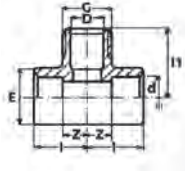
### IBG® Tee90° solvent socket / female thread, reinforced, grey

d-G	PN	DN	I	L	Z	Z1	E	G-kg	PU	Prod.No.
16-3/8"	16	10	23	12	9	12	23	0.02	50.00	70826
20-1/2"	16	15	28	15	12	14	30	0.04	100.00	70827
25-3/4"	16	20	33	16,3	15	16,7	35	0.06	70.00	70828
32- 1"	16	25	40,5	19,1	17	21,5	41,8	0.09	100.00	70829
40-1 1/4"	16	32	48,3	21,4	21,6	26,9	50,7	0.12	50.00	70830
50-1 1/2"	16	40	59,3	21,4	27,8	33,6	61,7	0.26	30.00	70831
63- 2"	16	50	71,8	25,7	33,3	45,8	77,2	0.43	30.00	70832
75-2 1/2"	10	65	82,5	34	38,5	48,5	88	0.70	18.00	70833
90- 3"	10	80	97	41	46	56	105	1.20	10.00	70834
110- 4"	10	100	117	41	56	77	130	1.89	7.00	70835



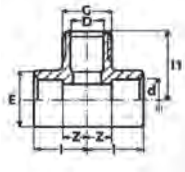
### IBG® Tee 90° solvent socket / female thread, PN10, grey

d-G	PN	DN	I	L	Z	Z1	E	G-kg	PU	Prod.No.
32-1"	10	25	39	19,1	17	21,5	41,8	0.08	10.00	71139
40-1 1/4"	10	32	48,3	21,4	21,6	26,9	50,7	0.12	50.00	71140
50-1 1/2"	10	40	59,3	21,4	27,8	33,6	62,7	0.22	30.00	71141
63-2"	10	50	71,8	25,7	33,3	45,8	77,2	0.41	30.00	71154



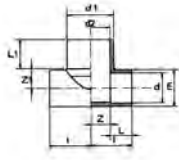
### IBG® Tee 90° solvent socket / pipe male thread, PN10, grey

d-G	PN	DN	I	L	Z	Z1	E	G-kg	PU	Prod.No.
32 - 1"	10	25	25	40,5	39	17	41	0.07	15.00	71225
32 - 1 1/4"	10	25	32	47,8	48	24	41	0.08	10.00	71226
40 - 1"	10	32	25	48,3	47,5	21	51	0.09	50.00	71227
40 - 1 1/4"	10	32	32	48,3	47,5	21	51	0.11	50.00	71228
50 - 1"	10	40	25	58,9	58,5	28	62	0.15	30.00	71229
50 - 1 1/4"	10	40	32	59,8	59	27	62	0.18	30.00	71230
50 - 1 1/2"	10	40	37	58,9	57	27	62	0.18	30.00	71231
63 - 1"	10	50	24	71,8	70,3	33	77	0.27	30.00	71232
63 - 1 1/4"	10	50	30	71,8	70,3	32	77	0.32	30.00	71233
63 - 1 1/2"	10	50	35	71,8	70,3	33	77	0.33	30.00	71234
63 - 2"	10	50	45	71,8	70,3	33	77	0.34	40.00	71235



### IBG® Tee90° solvent socket / reduced, PN16, grey

d-d1	PN	DN	I	Z	Z1	E	E1	G-kg	PU	Prod.No.
25-20	16	20-15	33,3	13,6	13,4	33,4	29,5	0.04	70.00	70702
32-20	16	25-15	39,8	17	16,8	41,8	29,7	0.07	100.00	70703
32-25	16	25-20	39,8	17	16,8	41,8	34,3	0.07	100.00	70704
40-20	16	32-15	47,7	21	20,7	50,4	31,4	0.11	50.00	70705
40-25	16	32-20	47,7	21	20,6	50,4	35,5	0.11	50.00	70452
40-32	16	32-25	47,7	21	20,7	50,4	42,5	0.12	50.00	71049
50-20	16	40-15	57,6	25,9	25,3	61,8	31,8	0.18	60.00	70706
50-25	16	40-20	57,6	25,9	25,4	61,8	36,8	0.18	50.00	70707
50-32	16	40-25	57,6	25,9	26,3	61,8	43,8	0.19	50.00	70708
50-40	16	40-32	57,6	25,9	25,5	61,6	51,8	0.19	50.00	70709
63-25	16	50-20	71,2	32,4	32,1	76,7	38,7	0.32	30.00	70710
63-32	16	50-25	71,2	33,4	32,1	76,7	45,8	0.33	30.00	70711
63-40	16	50-32	71,2	33,4	32,1	76,7	53,8	0.33	30.00	70712
63-50	16	50-40	71,2	33,4	32,1	76,7	63,8	0.34	30.00	70023
75-32	16	65-25	82,5	38,5	38,5	92	42	0.55	30.00	70960
75-40	16	65-32	82,5	38,5	38,5	92	51	0.57	30.00	71050
75-50	16	65-40	82,5	38,5	38,5	92	61	0.58	28.00	71051
90-32	16	80-25	97	46	46	110	42,5	0.92	8.00	71052
90-50	16	80-40	97	46	46	110	62,5	0.96	8.00	71053
90-63	16	80-50	97	46	46	110	77	0.98	10.00	70958
90-75	16	80-65	97	46	46	110	92,5	1.03	14.00	70959
110-32	16	100-25	117	61	61	132	42,5	1.54	9.00	71054
110-50	16	100-40	117	61	61	133	62,5	1.56	9.00	70961
110-90	16	100-80	117	61	61	133	110	1.74	8.00	70962



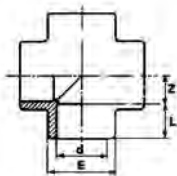
### IBG® Tee 45° solvent socket, grey

d	PN	DN	I	I1	Z1	Z	B	E	G-kg	PU	Prod.No.
10	16	6	30	30	18	4	12	16	0.01	150.00	70006
12	16	8	33	33	21	4	12	18	0.01	150.00	70007
16	16	10	39	39	25	5	14	23	0.02	150.00	70020
20	16	15	46	46	30	6	16	27,5	0.08	150.00	70713
25	16	20	52	56	36	6	19	33	0.09	150.00	70714
32	16	25	66	66	45	7	22	42	0.12	100.00	70715
40	16	32	82	82	56	10	26	50,5	0.20	80.00	70716a
50	16	40	100	100	69	12	31	62	0.30	40.00	70717
63	10	50	124	124	86	14	38	77,5	0.55	30.00	70718
75	10	65	146	146	102	17	44	93	0.98	16.00	70719
90	10	80	172	172	121	20	51	116	1.44	9.00	70720
110	10	100	209	209	148	24	61	128	2.30	5.00	70721
125	10	110	236	236	167	30	69	147	3.91	3.00	71055
140	10	125	266	266	190	34	76	168	5.98	2.00	70450
160	10	150	297	297	211	35	86	190	5.99	2.00	70722
200	6	175	373	315	266	49	107	232	11.72	1.00	72060
225	6	200	417	352	297	55	126	258	16.50	1.00	72061
250	6	250	462	390	330	60	132	284	21.47	1.00	72062



### IBG® Tee90° solvent socket (for whirlpools), grey

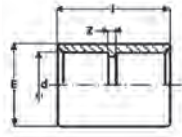
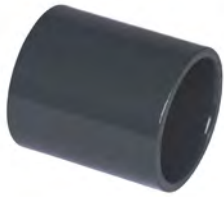
d-D1-d	PN	DN	I	L	Z	L1	E	Z1	G-kg	PU	Prod.No.
32-50-32	10	25	45	21	22	53	39	22	0.07	100.00	73863
50-50-50	10	25	40	33	26	x	x	x	0.20	100.00	73865



### IBG® cross solvent socket, grey

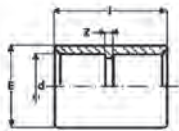
d	PN	DN	I	Z	E	G-kg	PU	Prod.No.
10	16	6	14	6,5	16	0.01	150.00	70453
12	16	8	12	7,5	18	0.01	150.00	70454
16	16	10	16	9,5	23	0.02	150.00	70455
20	16	15	16	11	28	0.04	100.00	70723
25	16	20	20,6	13,5	31,4	0.05	150.00	70724
32	16	25	23	17	42	0.10	150.00	70725
40	16	32	33	21	51	0.15	90.00	70726
50	16	40	32	26	63	0.24	54.00	70727
63	16	50	38,5	32,5	77	0.42	25.00	70728
75	10	65	41,4	38,5	92	0.78	16.00	70729
90	10	80	52,5	46	106	1.31	5.00	70730
110	10	100	61	56	133	2.30	5.00	70731





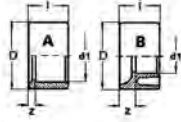
### IBG® socket solvent socket, grey

d	PN	DN	I	Z	E	G-kg	PU	Prod.No.
10	16	6	27	3	16	0.01	300.00	70732
12	16	8	27	3	18	0.01	250.00	70733
16	16	10	32	3	22,5	0.01	200.00	70734
20	16	15	35,8	3	27,3	0.01	200.00	70735
25	16	20	41,5	3	31	0.02	200.00	70736
32	16	25	47,4	3	39	0.03	100.00	70737
40	16	32	55	3	48,1	0.04	150.00	70738
50	16	40	65,8	3	60	0.07	60.00	70739
63	16	50	80	3	75,1	0.14	50.00	70740
75	16	65	93	4	90	0.23	50.00	70741
90	16	80	106	5	105,5	0.38	30.00	70742
110	16	100	145	7	145	0.64	20.00	70743
125	16	110	145	7	145	0.95	12.00	71056
140	16	125	160	8	163	1.44	8.00	70744
160	16	150	181,5	8	189	2.07	6.00	70745
200	10	175	222	12	232	3.30	1.00	70746
225	10	200	249	11	262	4.00	1.00	70747
250	10	250	270	8	286	5.81	1.00	71057
280	10	250	304	10	320	8.70	1.00	71058
315	10	300	342	12	355	10.78	1.00	71060



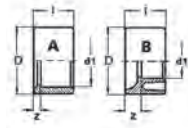
### IBG® socket solvent socket, black (for solar systems), PN16

d	PN	DN	I	Z	E	G-kg	PU	Prod.No.
50	16	40	65,8	3	60	0.08	60.00	70887



## IBG® reductions, short, solvent spigot / solvent socket, grey

D-d1	PN	DN x DN1	I	Z	Type	G-kg	PU	Prod.No.
	16	10-8	14	2	A	0.01	300.00	70748
20-16	16	15-10	16	2	A	0.01	300.00	70749
25-12	16	20-8	19	2	B	0.01	10.00	71564
25-16	16	20-10	19	4,5	A	0.01	200.00	70750
25-20	16	20-15	19	2,5	A	0.01	200.00	70751
32-16	16	25-10	22	8	B	0.02	250.00	70752
32-20	16	25-15	22	6	B	0.01	200.00	70753
32-25	16	25-20	22	3,5	A	0.01	200.00	70754
40-16	16	32-10	26	12	B	0.02	150.00	70755
40-20	16	32-15	26	10	B	0.02	150.00	70756
40-25	16	40-20	26	7	A	0.02	150.00	70757
40-32	16	32-25	26	4	A	0.02	150.00	70758
50-20	16	40-15	31	15	B	0.04	170.00	70499
50-25	16	40-20	31	12,5	B	0.04	170.00	70498
50-32	16	40-25	31	9	B	0.04	170.00	70497
50-40	16	40-32	31	5	A	0.03	170.00	70496
63-25	16	50-20	38	19	B	0.05	140.00	70503
63-32	16	50-25	38	15,5	B	0.06	140.00	70502
63-40	16	50-32	38	11,5	B	0.06	140.00	70501
63-50	16	50-40	38	6,5	A	0.06	140.00	70500
75-32	16	65-25	44	21,5	B	0.09	80.00	70759
75-40	16	65-32	44	19	B	0.08	80.00	70760
75-50	16	65-40	44	12,5	B	0.09	80.00	70761
75-63	16	75-50	44	8	A	0.18	80.00	70762
90-40	16	80-32	51	25	B	0.16	40.00	70763
90-50	16	80-40	51	20	B	0.18	40.00	70764
90-63	16	80-50	51	13,5	B	0.16	40.00	70765
90-75	16	80-65	51	7,5	A	0.14	40.00	70766
110-50	16	100-40	61	30	B	0.27	30.00	70767
110-63	16	100-50	61	23,5	B	0.29	30.00	70768
110-75	16	100-65	61	17,5	B	0.30	30.00	70769
110-90	16	100-80	61	10	A	0.26	30.00	70770
125-75	16	110-61	69	25	B	0.41	24.00	72063
125-90	16	110-80	69	18	B	0.42	24.00	71079
125-110	16	110-100	69	8	A	0.29	24.00	71080
140-75	16	125-65	76	32	B	0.58	15.00	70771
140-90	16	125- 80	76	25	B	0.63	15.00	70590
140-110	16	125-100	76	15	A	0.62	15.00	70772
140-125	16	125-110	76	15	A	0.34	15.00	70451
160-90	16	150- 80	86	35	B	0.88	10.00	70592
160-110	16	150-100	86	25	B	0.84	10.00	70591
160-125	10	150-110	86	17	B	0.99	2.00	71957
160-140	10	150-125	86	10	A	0.56	10.00	70773
200-110	10	175-100	106	46	B	2.11	10.00	70774
200-125	10	175-110	106	36	B	2.14	10.00	70775
200-140	10	175-125	106	29	B	2.04	10.00	70776
200-160	10	175-150	106	31	B	1.76	10.00	70777
225-110	10	200-100	106	59	B	2.70	3.00	70778
225-125	10	200-110	119	50	B	2.78	3.00	72064
225-140	10	200-125	108	40,5	B	2.81	3.00	70779
225-160	10	200-150	118	32,5	B	2.75	3.00	70780
225-200	10	200-175	118	12	A	1.57	3.00	70636
250-125	10	250-110	131	62	B	3.46	3.00	72065
250-140	10	250-125	131	55	B	3.39	3.00	72066
250-160	10	250-150	131	46	B	3.58	3.00	71081
250-200	10	250-175	131	26	A	3.42	3.00	71082
250-225	10	250-200	131	12	A	1.89	3.00	71083



D-d1	PN	DN x DN1	I	Z	Type	G-kg	PU	Prod.No.
280-200	10	250-175	146	40	B	4.66	1.00	71084
280-225	10	250-200	146	27	B	4.66	1.00	71085
280-250	10	250-250	146	15	A	2.77	1.00	71086
315-160	6	300-150	163	86	B	5.52	1.00	72067
315-200	6	300-175	163	57	B	5.77	1.00	71087
315-225	6	300-200	163	44	B	5.95	1.00	71088
315-250	6	300-250	163	32	B	6.79	1.00	71089
315-280	6	300-250	163	17	A	3.98	1.00	71090
355-315	6	315-300	184	20	B	5.77	1.00	72086
400-250	6	350-250	206	75	B	11.54	1.00	72069
400-315	6	370-300	206	42	B	13.67	1.00	71091
400-355	6	370-300	206	21	A	7.98	1.00	71092



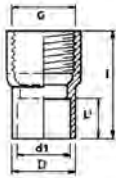
### IBG® reductions, short, solvent d50/d63 female thread

Produkt	G-kg	PU	Prod.No.
Reduction short PVC grey solvent D/female thread d50 - 1/2"	0.06	100.00	170032
Reduction short PVC grey solvent D/female thread - d50-3/4"	0.06	100.00	170033
Reduction short PVC grey solvent D/female thread d63 - 1/2"	0.09	100.00	170030
Reduction short PVC grey solvent D/female thread - d63-3/4"	0.10	100.00	170031



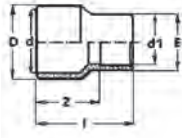
### Teflon strip

Produkt	G-kg	PU	Prod.No.
Teflon tape 12 x 0,075 x 12 mm	0.01	1.00	71940



### IBG® reductions, short, solvent spigot / female thread, PN10

D(d1)-G	PN	DN	I	I1	Tpye	Sw	G-kg	PU	Prod.No.
16 - 1/4"	10	10	22	14	B	19	0.01	250.00	71247
20 - 1/4"	10	15	24	16	B	22	0.01	250.00	71256
20 - 3/8"	10	15	24	16	B	22	0.01	250.00	71257
25 - 3/8"	10	20	27	19	B	27	0.01	250.00	71258
25 - 1/2"	10	20	27	19	B	27	0.01	250.00	70970
32 - 1/2"	10	25	30	22	B	36	0.03	250.00	71259
32 - 3/4"	10	25	30	22	B	36	0.02	250.00	71260
40 - 1/2"	10	32	37	26	B	46	0.04	200.00	71261
40 - 3/4"	10	32	37	26	B	46	0.04	100.00	71262
40 - 1"	10	32	37	26	B	46	0.03	100.00	71263
50 - 1/2"	10	40	43	31	B	55	0.07	100.00	71264
50 - 3/4"	10	40	43	31	B	55	0.07	100.00	71265
50 - 1"	10	40	43	31	B	55	0.07	100.00	71266
50 - 1 1/4"	10	40	43	31	B	55	0.05	100.00	71267
50/40 - 1 1/2"	10	40	81	26	A	×	0.13	100.00	71268
63 - 1 1/4"	10	51	51	38	B	65	0.11	100.00	71269
63 - 1 1/2"	10	50	51	38	B	65	0.10	100.00	71270
63 /50 - 2"	10	50	98	32	C	80	0.32	50.00	71271
75 - 1 1/4"	10	63	57	44	B	80	0.17	50.00	71272
75 - 1 1/2"	10	65	57	44	B	80	0.16	50.00	71273
75 - 2"	10	65	57	44	B	80	0.15	50.00	71274
75 /63 - 2 1/2"	10	65	83	38	A	×	0.38	25.00	71275
90/75 - 2"	10	80	71	51	B	95	0.28	25.00	71276
90/75 - 3"	10	80	97	51	A	×	0.31	25.00	71277
110/90 - 2"	10	100	93	61	B	115	0.52	25.00	71278
110/90 - 2 1/2"	10	100	93	61	B	115	0.48	25.00	71279
110 - 3"	10	100	83	61	B	115	0.45	25.00	71280
125 - 3"	10	110	94	69	B	138	0.65	5.00	71281
125 - 4"	10	110	94	69	B	138	0.45	5.00	71282



**IBG® reductions, long, solvent socket / solvent spigot / solvent socket, PN16, grey**

D-d-d1	PN	DN	I	Z	E	G-kg	PU	Prod.No.
10-8-6	16	6-5-5	26	14	10	0.01	250.00	70781
12-10-8	16	8-5-6	26	14	12	0.01	250.00	70782
16-12-8	16	10-8-5	32	18	11	0.01	250.00	70783
16-12-10	16	10-8-6	32	18	14	0.01	250.00	70784
20-16-10	16	15-10-6	32	18	14	0.01	100.00	70785
20-16-12	16	15-10-8	33	21	19	0.01	100.00	70786
25-20-16	16	20-15-10	39	25	23	0.01	100.00	70787
25-20-20	16	20-15-15	42	25	25	0.01	100.00	70789
32-25-16	16	25-20-10	44	30	23	0.02	100.00	70459
32-25-20	16	25-20-15	45	30	28	0.02	100.00	70790
32-25-25	16	25-20-20	49	30	32	0.02	100.00	70791
40-32-16	16	32-25-10	50	36	28	0.02	110.00	70792
40-32-20	16	32-25-15	52	36	28	0.03	110.00	70793
40-32-25	16	32-25-20	55	36	33	0.03	110.00	70794
40-32-32	16	32-25-25	58	36	40	0.04	110.00	70795
50-40-20	16	40-32-15	60	44	28	0.05	50.00	70796
50-40-25	16	40-32-20	63	44	33	0.05	50.00	70458
50-40-32	16	40-32-25	66	44	42	0.07	50.00	70797
50-40-40	16	40-32-32	70	44	50	0.07	50.00	70798
63-50-25	16	50-40-20	74	54	33	0.09	50.00	70799
63-50-32	16	50-40-25	73	54	42	0.10	50.00	70800
63-50-40	16	50-40-32	81	54	51,5	0.11	40.00	70801
63-50-50	16	50-40-40	81	54	65,1	0.14	50.00	70802
75-63-32	16	65-50-25	84	62	42	0.13	50.00	70803
75-63-40	16	65-50-32	92	62	52,4	0.14	50.00	70804
75-63-50	16	65-50-50	93	62	63,5	0.16	50.00	70805
75-63-63	16	65-50-50	100	62	75	0.19	50.00	70806
90-75-40	16	80-65-32	100	74	51,5	0.22	20.00	70807
90-75-50	16	80-65-40	105	74	63,5	0.24	20.00	70808
90-75-63	16	80-65-50	112	74	76,5	0.27	20.00	70809
90-75-75	16	80-65-65	118	74	90	0.32	10.00	70810
110-90-50	16	100-80-40	112	81	60	0.44	30.00	70811
110-90-63	16	100-80-50	112	74	75	0.44	30.00	70639
110-90-75	16	100-80-65	112	68	92	0.46	12.00	70812
125-110-63	16	110-100-50	131	93	77	0.46	5.00	70813
125-110-75	16	110-100-65	131	87	92	0.51	5.00	70814
125-110-90	16	110-100-80	131	80	106	0.53	5.00	70815
140-125-75	16	125-110-65	146	102	92	0.63	5.00	70640
140-125-90	16	125-110-80	146	95	106	0.65	5.00	70788
140-125-110	16	125-110-100	146	85	92	0.71	5.00	70641



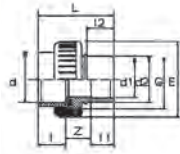
### IBG® adapter union solvent socket , grey

d	PN	DN	E	G	L	I	I1	Z	G-kg	PU	Prod.No.
10	16	6	31	5/8"	37	15	22	13	0.03	200.00	72114
12	16	8	29	5/8"	38	15	22	13	0.02	200.00	71116
16	16	10	34	3/4"	41	17	24	13	0.03	100.00	70682
20	16	15	42	1"	45	19	26	13	0.04	100.00	70513
25	16	20	53	1 1/4"	51	22	29	13	0.06	100.00	70683
32	16	25	58	1 1/2"	58	25	33	13	0.09	100.00	70514
40	16	32	73	2"	67	29	38	15	0.15	60.00	70515
50	16	40	83	2 1/4"	80	34	45	17	0.19	32.00	70684
63	16	50	103	2 3/4"	99	42	56	21	0.36	20.00	70685
75	10	65	118	3 1/2"	108	47	62	20	0.60	20.00	70686
90	10	80	135	4"	124	56	68	22	0.75	20.00	70687
110	10	100	163	5"	138	66	72	16	1.16	6.00	70688



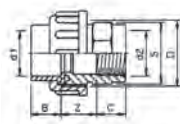
### IBG® adapter union solvent socket for transition ISO/ASTM pipe to metric pipe, grey

d-D	PN	DN	E	G	L	I	I1	Z	G-kg	PU	Prod.No.
1/2" ISO/ASTM-20 mm	16	15	42	1"	45	19	26	13	0.09	10.00	72115
3/4" ISO-25 mm	16	20	53	1 1/4"	51	22	29	13	0.08	10.00	72116
3/4" ASTM-25 mm	16	20	53	1 1/4"	51	22	29	13	0.08	10.00	72117
1" ISO-32 mm	16	25	58	1 1/2"	58	25	33	13	0.10	18.00	72118
1" ASTM-32 mm	16	25	58	1 1/2"	58	25	33	13	0.09	20.00	72119
1 1/4" ISO-40 mm	16	32	73	2"	67	29	38	14	0.17	10.00	72120
1 1/4" ASTM-40 mm	16	32	73	2"	67	29	38	14	0.17	10.00	72121
1 1/2" ASTM/ISO-50 mm	16	40	83	2 1/4"	80	34	45	17	0.20	32.00	72122
2" ASTM/ISO-63 mm	16	50	103	2 3/4"	99	42	56	21	0.37	20.00	72123



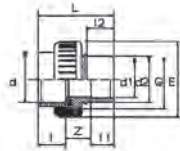
**IBG® adapter union reducing pipe solvent socket / solvent socket / solvent spigot, PN16, grey**

d-d1-d2	PN	DN	G	L	I	L1	L2	G-kg	PU	Prod.No.
50 - 40/50	16	40	2 1/4"	86	34	x	x	0.21	90.00	71313
63 - 50/63	16	50	2 3/4"	112	42	37	85	0.37	90.00	71314



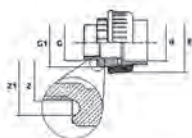
**IBG® adapter union solvent socket / female thread, type 1**

d-G	PN	DN	L	G1	I	I1	Z	E	G-kg	PU	Prod.No.
12 - 1/4"	10	6	46	5/8"	12	24	13	35	0.02	10.00	72601
16 - 3/8"	10	10	42	3/4"	18	24	13	37	0.03	20.00	71214
20 - 1/2"	10	15	46	1"	19	26	13	43	0.04	60.00	71215
25 - 3/4"	10	20	51	1 1/4"	22	29	13	53	0.06	90.00	71216
32 - 1"	10	25	58	1 1/2"	25	33	13	60	0.09	100.00	71217
40 - 1 1/4"	10	32	67	2"	29	38	15	74	0.15	60.00	71218
50 - 1 1/2"	10	40	80	2 1/4"	34	45	17	83	0.21	32.00	71219
63 - 2"	10	50	98	2 3/4"	41	56	21	103	0.39	20.00	71220



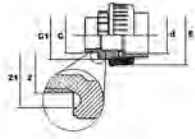
**IBG® adapter union solvent socket / male thread, type B, grey**

d-G	PN	DN	G1	L	Z1	Z2	E	G-kg	PU	Prod.No.
12 - 1/4"	10	6	5/8"	12	9	5	33	0.03	50.00	72169
16 - 3/8"	10	10	3/4"	17	9	5	35	0.04	50.00	71240
20 - 1/2"	10	15	1"	19	10	5	43	0.04	100.00	71241
25 - 3/4"	10	20	1 1/4"	22	11	6	53	0.08	50.00	71242
32 - 1"	10	25	1 1/2"	25	12	6	60	0.10	80.00	71243
40 - 1 1/4"	10	32	2"	29	14	7	74	0.18	50.00	71244
50 - 1 1/2"	10	40	2 1/4"	34	16	7	83	0.19	40.00	71245
63 - 2"	10	50	2 3/4"	41	18	8	103	0.38	20.00	71246



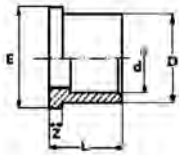
**IBG® adapter union solvent socket / male thread with O-ring sealing on thread, grey, PN10**

d-G	PN	DN	G1	L	Z1	Z2	G-kg	PU	Prod.No.
50 - 1 1/2"	10	40	2 1/4"	48	58	83	0.22	60.00	71973
50 - 2"	10	40	2 1/4"	60	70	83	0.20	40.00	71975
63 - 2"	10	50	2 3/4"	60	70	103	0.40	35.00	71977



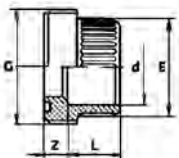
**IBG® adapter union solvent socket / male thread with O-ring sealing on thread, white, PN10**

d-G	PN	DN	G1	L	Z1	Z2	G-kg	PU	Prod.No.
50 - 1 1/2"	10	40	2 1/4"	48	58	83	0.22	60.00	71974
50 - 2"	10	40	2 1/4"	60	70	83	0.22	40.00	71976



**IBG® union end for unions, spare part union**

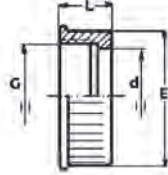
d	PN	DN	L	Z	D	E	G-kg	PU	Prod.No.
16	16	10	17	5	22	24	0.01	50.00	71142
20	16	15	19	5	27,5	30,1	0.01	280.00	70560
25	16	20	22	6	36	38,8	0.01	200.00	70561
32	16	25	25	6	41,5	44,7	0.02	300.00	70562
40	16	32	29	7	53	56,5	0.04	250.00	70563
50	16	40	34	7	59	62,6	0.04	250.00	70564
63	16	50	41	8	74	78,4	0.07	100.00	70565
75	16	65	44	9	92,5	97,2	0.17	25.00	71117
90	16	80	51	10	105	110	0.23	5.00	71118
110	10	100	61	12	129	134,4	0.32	5.00	71119



**IBG® union bush for unions**

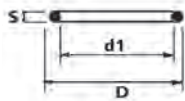
d	PN	DN	G	L	Z	E	G-kg	PU	Prod.No.
16	16	10	3/4	14	10	22	0.02	50.00	71120
20	16	15	1	16	15	26	0.01	100.00	71121
25	16	20	1 1/4	19	20	33,3	0.02	50.00	71122
32	16	25	1 1/2	22	25	41,5	0.03	80.00	70991
40	16	32	2	28	32	51	0.05	20.00	71123
50	16	40	2 1/4	33	40	61	0.06	45.00	71124
63	16	50	2 3/4	42	50	76,5	0.13	35.00	71125
75	10	65	3 1/2	44	31	96	0.22	10.00	71126
90	10	80	4	51	35	109	0.39	10.00	71127
110	10	100	5	61	41	133	0.61	10.00	71128





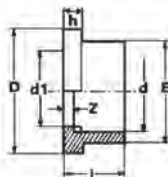
### IBG® union nut for unions

d	PN	DN	d	L	E	G-kg	PU	Prod.No.
3/4"-16	16	10	22,1	21	35	0.02	200.00	70462
1"-20	16	15	27,6	23	43	0.02	150.00	70566
1 1/4"-25	16	20	36,1	25	53	0.03	100.00	70567
1 1/2"-32	16	25	41,6	27	60	0.04	120.00	70568
2"-40	16	32	53,1	30	74	0.06	75.00	70569
2 1/4"-50	16	40	59,1	32	83	0.08	60.00	70570
2 3/4"-63	16	50	74,1	37,5	103	0.15	50.00	70571
3 1/2"-75	16	65	90	43	120	0.20	25.00	71129
4"-90	16	80	108	45	135	0.36	6.00	71130
5"-110	10	100	130	51	160	0.39	2.00	71131



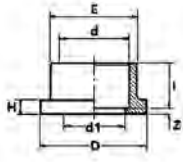
### IBG® O-ring for union bushes, EPDM

d	DN	D	d1	S	G-kg	PU	Prod.No.
16	10	20,84	15,6	2,62	0.01	100.00	71428
20	15	27,36	20,3	3,53	0.01	100.00	50484
25	20	35,26	28,2	3,53	0.01	1.00	50008
32	25	40,06	33	3,53	0.01	1.00	50009
40	32	51,36	40,7	5,34	0.01	100.00	50487
50	40	57,76	47,1	5,34	0.01	100.00	50216
63	50	70,46	59,8	5,34	0.01	100.00	50272
75	65	86,23	75,57	5,33	0.01	1.00	50298a
90	80	98,93	88,27	5,33	0.01	50.00	71432
110	100	124,33	113,67	5,33	0.01	50.00	71433



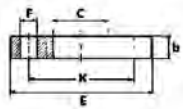
### IBG® flange adapter grooved

d	PN	DN	I	Z	d1	h	E	D	G-kg	PU	Prod.No.
63	16	50	41	3	57	9	76	90	0.10	60.00	71098
75	16	65	47	3	69	10	90	106	0.16	60.00	70148
90	10	80	56	5	82	11	108	125	0.27	50.00	71099
110	10	100	66	5	102	12	131	150	0.43	30.00	71100
125	10	110	72	5	120	18	147	170	0.64	10.00	70633
140	10	125	80	5	132	14	165	188	0.77	15.00	71101
160	10	150	91	5	152	16	188	213	1.11	12.00	71102
200	10	175	112	6	193	18	228	248	1.15	3.00	70637
225	10	200	119	6	217	25	248	274	1.97	4.00	71103



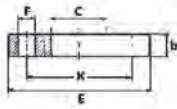
### IBG® flange adapter flat

d	PN	DN	I	Z	d1	h	E	D	G-kg	PU	Prod.No.
16	16	10	17	3	13	6	22	29	0.01	100.00	70150
20	16	15	19	3	16	6	27	34	0.01	100.00	70151
25	16	20	22	3	21	7	33	41	0.02	80.00	70152
32	16	25	25	3	28	7	41	50	0.02	100.00	70153
40	16	32	29	3	36	8	50	61	0.04	100.00	70154
50	16	40	34	3	45	8	61	73	0.06	150.00	70155
63	16	50	41	3	57	9	76	90	0.10	100.00	70137
75	16	65	47	3	69	10	90	106	0.16	40.00	70156
90	16	80	56	5	82	11	113	125	0.27	50.00	70157
110	16	100	66	5	102	12	128	150	0.43	20.00	70172
140	16	125	81	5	132	14	165	188	0.76	16.00	70173
160	16	150	91	5	152	16	188	213	1.12	12.00	70174
200	10	x	x	x	x	x	x	x	1.15	3.00	70637
225	10	200	119	6	217	25	248	274	2.32	4.00	70175
250	10	250	130	8,5	238	25	282	328	2.50	2.00	71399
280	10	250	145	9	x	27	306	327	3.26	2.00	70176
315	10	300	164	8,5	x	30	342	378	4.14	1.00	70177
355	10	315	184	8	x	29,5	386	413	5.93	1.00	71104
400	6	370	206	12	x	26	432	483	8.95	1.00	71105
450	4	x	100	4,5	x	21	486	537	5.40	1.00	71106
500	4	x	153	8	x	24	532	574	7.40	1.00	70505



### IBG® flange adapter connection dimensions DIN/ISO, PVC-U

d	PN	DN	b	C	E	K	F	AL	G-kg	PU	Prod.No.
16	10	10	10	23	90	60	14	4	0.06	50.00	70139
20	10	15	11	28	95	65	14	4	0.08	50.00	70140
25	10	20	12	34	105	75	14	4	0.09	40.00	70141
32	10	25	14	42	115	85	14	4	0.12	45.00	70142
40	10	32	15	51	140	100	18	4	0.20	30.00	70143
50	10	40	16	62	150	110	18	4	0.24	30.00	70144
63	10	50	18	78	165	125	18	4	0.36	30.00	70136
75	10	65	19	92	185	145	18	4	0.42	25.00	70145
90	10	80	20	110	200	160	18	8	0.47	20.00	70146
110	10	100	22	132	219	180	18	8	0.56	20.00	70166
125	10	110	26	149	235	190	18	8	0.71	15.00	70634
140	10	125	27	165	247	210	18	8	0.75	25.00	70167
160	10	150	28	190	280	240	21	8	1.08	14.00	70168
200	10	200	31	234	335	295	21	8	1.40	12.00	70638
225	10	200	31	250	341	295	22	8	1.31	8.00	70169
250	6	250	33	285	395	350	22	12	1.40	10.00	71108
280	6	250	32	307	399	350	22	12	1.79	1.00	70170
315	6	300	34	345	450	400	22	12	2.45	1.00	70171
355	6	350	34	388	511	460	22	12	3.43	1.00	71109
400	6	400	34	438	572	515	25	16	4.45	1.00	71110
450	4	x	32	488	614	565	25	20	5.40	1.00	71111
500	4	x	29	542	655	600	20	20	5.77	1.00	70611



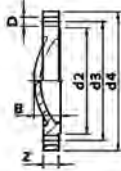
### IBG® flange adapter connection dimensions DIN/ISO, GKF, black

d	PN	DN	b	C	E	K	F	AL	G-kg	PU	Prod.No.
25	16	20	12	34	105	75	14	4	0.10	5.00	70547
32	16	25	14	42	115	85	14	4	0.12	5.00	70548
40	16	32	15	51	140	100	18	4	0.19	5.00	70549
50	16	40	16	62	150	110	18	4	0.23	5.00	70550
63	16	50	17	78	165	125	18	4	0.36	5.00	70551
75	16	65	19	92	185	145	18	4	0.40	5.00	70552
90	16	80	20	110	200	160	18	8	0.49	5.00	70553
110	16	100	22	132	219	180	18	8	0.54	5.00	70554
125	16	110	26	149	235	190	18	8	0.22	1.00	70555
140	16	125	27	167	247	210	18	8	0.73	15.00	70556
160	16	150	28	190	280	240	21	8	1.04	14.00	70557
200	10	175	31	220	331	295	21	8	1.46	12.00	70558
225	10	200	31	250	341	295	22	8	1.26	5.00	70559



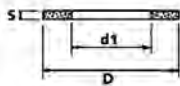
### PRAHER PLASTICS PVC-u fix flange DIN-ANSI-JIS, PN10

Produkt	G-kg	PU	Prod.No.
Fix flange - turned - DN15 PVC grey solvent socket d20 DIN-ANSI-JIS PN16	0.09	1.00	142069
Fix flange - turned - DN20 PVC grey solvent socket d25 DIN-ANSI-JIS PN16	0.11	1.00	142070
Fix flange - turned - DN25 PVC grey solvent socket d32 DIN-ANSI-JIS PN16	0.18	1.00	142071
Fix flange - turned - DN32 PVC grey solvent socket d40 DIN-ANSI-JIS PN16	0.24	1.00	142072
Fix flange - turned - DN40 PVC grey solvent socket d50 DIN-ANSI-JIS PN16	0.33	1.00	142073
Fix flange - turned - DN50 PVC grey solvent socket d63 DIN-ANSI-JIS PN16	0.45	1.00	142074
Fix flange - turned - DN65 PVC grey solvent socket d75 DIN-ANSI-JIS PN16	0.65	1.00	142075
Fix flange - turned - DN80 PVC grey solvent socket d90 DIN-ANSI-JIS PN16	0.82	1.00	142076
Fix flange - turned - DN100 PVC grey solvent socket d110 DIN-ANSI-JIS PN16	0.96	1.00	142077



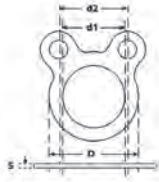
### IBG® flange DIN/ISO, PN10

d	PN	DN	d2	d3	d4	Z	B	NxD	G-kg	PU	Prod.No
16	10	10	60	29	90	10	13,5	4x14	0.07	10.00	73850
20	10	15	60,5/63	34	95	11	14,5	4x16	0.08	10.00	73851
25	10	20	70/73	41	105	12	16	4x16	0.10	10.00	73852
32	10	25	79/83	50	115	14	19	4x16	0.12	10.00	73853
40	10	32	91/100	61	140	15	20	4x18	0.23	5.00	73854
50	10	40	101/110	74	150	16	22	4x18	0.30	5.00	73855
63	10	50	120,5/125	91	165	18	24,5	4x18	0.40	5.00	73856
75	10	65	139,5/144	106	185	19	26,5	4x19	0.54	5.00	73857
90	10	80	152,5/159	125	200	20	30	8x19	0.71	5.00	73858
110	10	100	181/190,5	150	220	22	34,5	8x19	0.90	2.00	73859
125	10	110	190	166	235	26	38,5	8x18	1.17	2.00	73860
140	10	125	215	184	250	26	39	8x23	1.35	2.00	73861
160	10	150	240	209	285	28	43,5	8x24	1.83	2.00	73862
200	10	175	248	295	315	36	63	8x22	2.46	5.00	71093
225	10	200	273	295	340	36	63	8x22	2.89	1.00	71094
250	10	250	303	350	370	36	63	8x22	4.60	1.00	71095
280	10	250	328	350	395	36	65	12x22	3.79	1.00	71096
315	10	300	400	378	445	36	65	12x22	4.87	1.00	71097
355	10	315	460	430	505	38	67	16x22	6.92	1.00	72070
400	10	370	515	482	565	42	71	16x26	8.94	1.00	72071



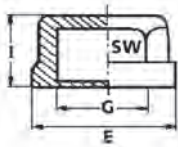
### IBG® flat gasket for flange adapter, Dutral (EPDM)

d	DN	D	d1	S	G-kg	PU	Prod.No.
16	10	27	16	2	0.01	10.00	70158
20	15	32	20	2	0.01	50.00	70159
25	20	39	25	2	0.01	50.00	70160
32	25	48	32	2	0.01	50.00	70161
40	32	59	40	3	0.01	50.00	70162
50	40	71	50	3	0.01	50.00	70163
63	50	88	63	3	0.01	50.00	70138
75	65	104	75	3	0.02	20.00	70164
90	80	123	90	3	0.01	20.00	70165
110	100	148	110	4	0.05	20.00	70178
125	110	166	125	3	0.10	10.00	70635
140	125	186	140	4	0.05	10.00	70179
160	150	211	160	4	0.07	25.00	70180
200	175	245	200	3	0.06	10.00	70643
225	200	284	215,5	4	0.13	10.00	70181
250	250	328	250	3	0.19	1.00	71112
280	250	327	280	3	0.20	1.00	70182
315	300	378	315	3	0.23	1.00	70183
355	310	413	355	3	0.37	1.00	71113
400	370	483	400	3	0.30	1.00	71114
450	400	537	450	3	0.23	1.00	71115
500	×	574	500	3	0.01	1.00	70612



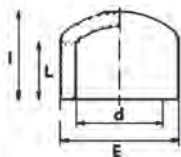
### IBG® flat gasket for flange adapter, with 2 screw holes (EPDM)

d	DN	D	d1	d2	S	G-kg	PU	Prod.No.
63	50	90	63	92	3	0.03	10.00	72068
75	65	104	75	105	3	0.02	10.00	70267
90	80	123	90	115	3	0.02	10.00	70268
110	100	148	110	130	3	0.03	10.00	70269
125	110	166	125	135	3	0.05	10.00	70270
140	125	186	140	150	3	0.05	10.00	70271
160	150	211	160	170	3	0.01	10.00	70272
200	175	245	200	210	3	0.01	1.00	70273
225	200	268	220	210	3	0.07	1.00	70274
250	250	329	280	350	3	0.12	1.00	72110
280	250	327	280	x	3	0.00	1.00	72111
315	300	378	315	400	3	0.20	1.00	72112
400	370	483	400	515	3	0.19	1.00	72113



### IBG® caps female thread, PN10, grey

G	PN	I	E	SW	G-kg	PU	Prod.No.
1/8"	10	14	20	17	0.01	100.00	72163
1/4"	10	16	26	22	0.01	100.00	72164
3/8"	10	19	31	27	0.01	100.00	71204
1/2"	10	21	37	32	0.02	100.00	70967
3/4"	10	24	43	36	0.02	150.00	70463
1"	10	26	52	46	0.04	90.00	71205
1 1/4"	10	29	62	55	0.06	80.00	71206
1 1/2"	10	31	66	60	0.07	50.00	71207
2"	10	36	82	75	0.12	25.00	71208



### IBG® caps solvent socket, grey

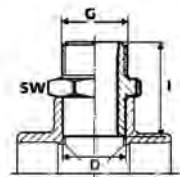
d	PN	DN	L	I	E	G-kg	PU	Prod.No.
12	16	8	12	15	16,5	0.01	200.00	70860
16	16	10	14	20	23,5	0.01	200.00	70861
20	16	15	16	23	27	0.01	200.00	70862
25	16	20	19	30	33,3	0.02	200.00	70863
32	16	25	22	33,5	41	0.02	180.00	70864
40	16	32	26	40	49,5	0.04	150.00	70865
50	16	40	31	46,5	60,4	0.06	150.00	70866
63	16	50	38	56	75,7	0.12	80.00	70867
75	16	65	44	66	89,6	0.18	50.00	70868
90	16	80	51	77,2	107,6	0.31	50.00	70869
110	16	100	61	93	130	0.54	30.00	70870
125	10	110	69	112	151	0.80	15.00	71400
140	10	125	76	121	161	1.38	15.00	70871
160	10	150	86	136	185	1.81	8.00	70872
200	10	175	55	x	x	1.20	5.00	71392
225	10	200	60	x	x	3.36	1.00	71393
250	10	250	60	x	x	2.50	1.00	71394
280	10	250	60	x	x	2.70	1.00	71395
315	10	300	65	x	x	3.60	1.00	71396
400	4	370	70	x	x	5.70	1.00	71397



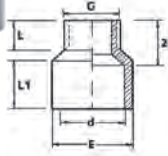
### IBG® adapter bush, solvent socket / male thread, PN16, grey

d/D-G	PN	DN	I	Z	SW	G-kg	PU	Prod.No.
12/16 - 1/4"	16	8	34,5	11,5	28	0.01	300.00	72187
12/16 - 3/8"	16	8	34,5	11,5	28	0.01	100.00	71290
16 - 3/8"	16	10	34,5	11,5	28	0.01	100.00	70853
16/20 - 3/8"	16	10	40,2	22	32	0.01	200.00	71291
16/20 - 1/2"	16	10	40,2	22	32	0.02	180.00	71292
20 - 1/2"	16	15	40,2	27	32	0.02	150.00	70854
20/25 - 1/2"	16	15	48	29	36	0.02	150.00	70963
25/32 - 3/4"	16	20	44	28	36	0.02	250.00	70964
25/32 - 1"	16	20	48	29,5	36	0.02	230.00	70856
32/40 - 1"	16	25	50,4	33	46	0.04	250.00	70582
32/40 - 1 1/4"	16	25	53,4	30,3	46	0.04	200.00	71293
40/50 - 1 1/4"	16	32	57	35	55	0.06	120.00	70857
40/50 - 1 1/2"	16	32	60	33,6	55	0.06	120.00	71294
50 - 1 1/4"	16	40	65	34	65	0.09	100.00	71295
50 - 1 1/2"	16	40	65	34	65	0.09	120.00	70508
50 - 2"	16	40	65	34	65	0.10	50.00	71296
50/63 - 1 1/2"	16	40	65	34	65	0.10	120.00	71297
50/63 - 2"	16	40	78	43	80	0.15	50.00	71298
63/75 - 1 1/4"	16	50	84	43	x1)	0.20	100.00	71299
63/75 - 1 1/2"	16	50	84	43	x1)	0.13	90.00	71300
63/75 - 2"	16	50	84	43	x1)	0.15	90.00	70509
63/75 - 2 1/2"	16	50	84	41,5	x1)	0.16	80.00	71302
63/75 - 2"	16	50	75,5	42	80	0.15	100.00	71301
75/90 - 2"	16	65	96	51,5	95	0.31	48.00	71303
75/90 - 2 1/2"	16	65	100	56	95	0.34	24.00	71304
75/90 - 3"	16	65	104	60	95	0.37	45.00	71305
90/110 - 2 1/2"	16	80	110	59	115	0.57	27.00	71306
90/110 - 3"	16	80	115	61,5	115	0.59	21.00	71307
90/110 - 4"	16	80	122	71	115	0.60	5.00	71308
110 - 3"	16	100	106	45	133	0.81	5.00	71309
110 - 4"	16	100	125	64	138	0.80	5.00	71310

### IBG® adapter bush, NPT, PN16, grey

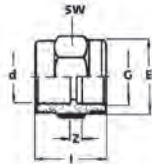


d/D-G	PN	DN	I	Z	SW	G-kg	PU	Prod.No.
50 - 1 1/2"	16	40	65	34	65	0.09	170.00	71311
50 - 2"	16	40	65	34	65	0.01	1.00	70312
63 - 2"	16	40	65	34	65	0.14	50.00	71289



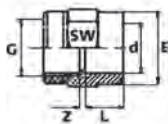
### IBG® adapter bush, solvent socket / male thread, grey

Produkt	OPR (bar)	DN	L	L1	Z	E	G-kg	PU	Prod.No.
75 - 1 1/2"	10	65	21	44	57	82	0.15	10.00	71376
75 - 2"	16	65	23	44	59	83	0.18	10.00	71377
75 - 2 1/2"	16	65	28	44	43	85	0.20	10.00	71378
90 - 2"	16	65	23	44	59	83	0.25	10.00	71379
90 - 2 1/2"	16	65	28	44	43	85	0.27	10.00	71380
90 - 3"	16	65	23	44	59	83	0.35	10.00	71381
110 - 3"	16	65	28	44	43	85	0.51	6.00	71382
110 - 4"	16	65	23	44	59	83	0.56	6.00	72180
160 - 6"	16	65	28	44	43	85	1.43	8.00	71389



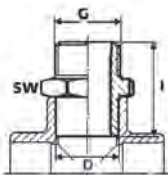
### IBG® adapter socket, solvent socket - female thread, reinforced, grey

d-G	PN	DN	I	Z	SW	E	G-kg	PU	Prod.No.
16- 3/8"	16	10	31	5	27	25	0.02	100.00	70836
20- 1/2"	16	15	32	5	30	29	0.02	150.00	70837
25- 3/4"	16	20	40	5	40	35	0.04	140.00	70838
32-1"	16	25	46,1	5	46	45	0.06	150.00	70839
40-1 1/4"	16	32	52,4	5	54	52	0.08	120.00	70840
50-1 1/2"	16	40	59,4	7	65	64	0.13	110.00	70841
63-2"	16	50	71	7	80	76	0.21	90.00	70842
75-2 1/2"	10	65	80	3	94	90	0.33	40.00	70843
90-3"	10	80	90	3	114	110	0.53	24.00	70844
110-4"	10	100	106	5	137	130	0.81	15.00	70845



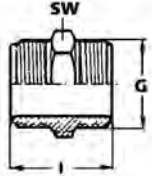
### IBG® adapter socket, solvent socket - female thread, PN10, grey

d-G	PN	DN	L	Z	SW	E	G-kg	PU	Prod.No.
10 - 1/4"	10	6	11,5	4	22	15	0.04	150.00	72185
12 - 1/4"	10	8	11,5	4	22	17	0.04	100.00	72186
32 - 1"	10	25	22	5	46	42	0.05	60.00	71236
40 - 1 1/4"	10	32	26	5	55	52	0.07	50.00	71237
50 - 1 1/2"	10	40	31	7	65	62	0.11	100.00	71238
63 - 2"	10	50	38	7	80	78	0.19	90.00	71239



### IBG® adapter nipple, solvent spigot - male thread, PN16, grey

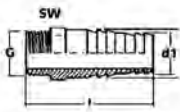
D-G	PN	DN	I	SW	G-kg	PU	Prod.No.
16 - 3/8"	16	10	35	27	0.01	200.00	70846
20 - 1/2"	16	15	42	32	0.02	180.00	70847
25 - 3/4"	16	20	47	36	0.03	100.00	70848
32 - 3/4"	16	25	54	46	0.04	100.00	71283
32 - 1"	16	25	54	46	0.04	150.00	70849
40 - 1"	16	32	60	55	0.06	100.00	71284
40 - 1 1/4"	16	32	60	55	0.06	100.00	70850
50 - 1 1/4"	16	40	66	65	0.09	80.00	71285
50 - 1 1/2"	16	40	66	65	0.09	90.00	70851
63 - 1 1/4"	16	50	78	80	0.14	35.00	71286
63 - 1 1/2"	16	50	78	80	0.14	50.00	71287
63 - 2"	16	50	78	80	0.16	45.00	70852



### IBG® double nipple, male thread, PN10, grey

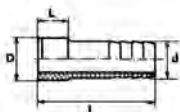
G	PN	DN	I	SW	G-kg	PU	Prod.No.
1/4"	10	6	32	19	0.01	100.00	72162
3/8"	10	10	34	22	0.01	100.00	71193
1/2"	10	15	42	24	0.01	100.00	70966
3/4"	10	20	47	30	0.02	100.00	70930
1"	10	25	53	36	0.03	100.00	71194
1 1/4"	10	32	56	46	0.07	100.00	71195
1 1/2"	10	40	57	55	0.07	100.00	71196
2"	10	50	68	65	0.11	100.00	71197
3/8"- 1/4"	10	x	36	24	0.01	50.00	71198
1/2"	10	x	39	27	0.01	50.00	71199
3/4"	10	x	46	32	0.02	50.00	70965
1"- 3/4"	10	x	49	36	0.03	50.00	71200
1 1/4"- 1"	10	x	53	46	0.05	25.00	71201
1 1/2"- 1 1/4"	10	x	57	55	0.07	25.00	71202
2"- 1 1/2"	10	x	62	65	0.10	25.00	71203

### IBG® hose nozzle, spigot – male thread, PN10, grey



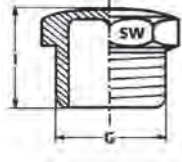
d-d1-G	PN	DN	I	SW	G-kg	PU	Prod.No.
14-12- 1/4"	10	8	53	15	0.01	100.00	71146
18-16- 3/8"	10	12	58	19	0.01	100.00	71147
22-20- 1/2"	10	15	76	24	0.02	100.00	71148
28-25- 3/4"	10	20	78	30	0.04	100.00	70931
34-31-1"	10	25	90	35	0.05	100.00	71150
43-40-1 1/4"	10	32	96	46	0.09	100.00	71151
53-50-1 1/2"	10	40	115	55	0.14	100.00	71152
66-60-2"	10	50	132	70	0.24	50.00	71153

### IBG® hose nozzle, spigot – male thread, PN16, grey



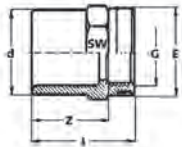
D-d	PN	DN	L	I	G-kg	PU	Prod.No.
10-8	16	6	12	51	0.20	100.00	71062
12-12	16	8	12	51	0.01	200.00	71063
16-16	16	10	14	57,2	0.01	200.00	70971
20-20	16	15	16	73	0.01	180.00	70972
25-25	16	20	19	79	0.02	140.00	70973
32-30	16	25	22	89	0.04	120.00	70974
40-40	16	32	26	91	0.06	120.00	70975
50-50	16	40	31	105	0.10	70.00	70976
63-60	16	50	38	116	0.14	50.00	70977





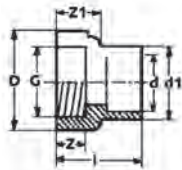
### IBG® plug, with cone shaped male thread, PN10, grey

G	PN	I	SW	G-kg	PU	Prod.No.
1/4"	10	18	17	0.01	100.00	72600
3/8"	10	21	27	0.01	100.00	71209
1/2"	10	27	24	0.01	100.00	70465
3/4"	10	29	30	0.06	100.00	70464
1"	10	32	36	0.02	100.00	71210
1 1/4"	10	36	46	0.07	100.00	71211
1 1/2"	10	37	55	0.05	100.00	71212
2"	10	42	65	0.11	100.00	71213
2 1/2"	10	41	94	0.24	10.00	72165
3"	10	43	114	0.36	10.00	72166
4"	10	46	138	0.59	10.00	72167



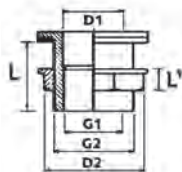
### IBG® reducing bush, solvent socket / female thread, reinforced, PN16, grey

d-G	PN	DN	I	Z	SW	E	G-kg	PU	Prod.No.
20- 3/8"	16	15	35	24	27	25	0.02	200.00	71143
25- 1/2"	16	20	43	27	32	20	0.03	130.00	70886
32- 3/4"	16	25	48	32	36	35	0.05	150.00	70885
40-1"	16	32	56	38	46	45	0.06	100.00	70884
50-1 1/4"	16	40	66	46	55	55	0.11	50.00	71144
63-1 1/2"	16	50	77	55	65	65	0.18	40.00	71145



### IBG® adapter, solvent socket/solvent spigot - female thread, reinforced, PN10, grey

d1-d-G	PN	DN	Z	Z1	I	D	G-kg	PU	Prod.No.
16/12 - 3/8"	10	10 - 8	12	15,5	33	24	0.02	50.00	71250
20/16 - 1/2"	10	15 - 10	15	20	34	28	0.02	100.00	71251
25/20 - 3/4"	10	20 - 15	16,3	21,9	38	34,6	0.03	100.00	71252
32/25 - 1"	10	25 - 20	19,1	26,4	45,5	44	0.10	50.00	71253
40/32 - 1 1/4"	10	32 - 25	21,4	31,4	54	55	0.08	40.00	71254
50/40 - 1 1/2"	10	40 - 32	21,4	32,2	59,5	63	0.12	30.00	71255
63/50 - 2"	10	50 - 40	25,7	39,2	71,5	77,5	0.50	30.00	70035



### IBG® tank adapter, male-/female thread, ring - CSM, grey

D1	G1	L	G2	L1	D2	G-kg	PU	Prod.No.
16	3/8"	35	3/4"	13	32	0.03	50.00	71155
20	1/2"	36	1"	15	41	0.07	50.00	71156
20	3/4"	36	1"	15	41	0.10	50.00	71157
25	1"	50	1 1/4"	18	55	0.14	50.00	70920
40	1 1/2"	64	2"	20	80	0.27	25.00	71158
63	2"	68	2 3/4"	23	100	0.25	5.00	71164



**IBG® tank adapter, male-/female thread, ring - Viton, grey**

D1	G1	L	G2	L1	D2	G-kg	PU	Prod.No.
16	3/8"	35	3/4"	13	32	0.03	5.00	71160
20	1/2"	36	1"	15	41	0.06	5.00	71161
20	3/4"	36	1"	15	41	0.10	5.00	71162
25	1"	50	1 1/4"	18	55	0.11	5.00	71163
40	1 1/2"	64	2"	20	80	0.25	5.00	71164
63	2"	68	2 3/4"	23	100	0.43	5.00	71165



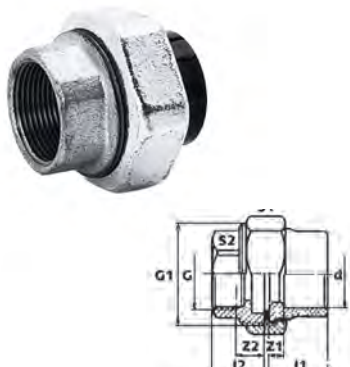
**IBG® tank adapter solvent socket/solvent spigot - BSP male thread sealing rings EPDM and polyamide, grea**

d	d2	d3	Z1	C	D	G-kg	PU	Prod.No.
20	25	3/4"	13	19	42	0.04	50.00	73413
25	32	1"	15	22	45	0.07	50.00	73414
32	40	1 1/4"	17	26	47	0.12	50.00	73415
40	50	1 3/4"	19	31	48	0.21	50.00	73416
50	63	2"	21	38	52	0.26	45.00	73417
50	63	2 1/4"	21	38	52	0.34	45.00	73418
63	75	2 1/2"	23	44	53	0.38	24.00	73419
75	90	3"	36	51	56	0.58	21.00	73420
90	110	M113	32	61	62	1.14	10.00	73421
110	125	M133	36	69	66	1.55	10.00	73422



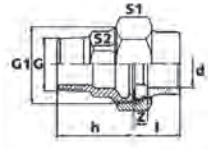
**IBG® tank adapter solvent socket - BSP male/female thread, sealing rings EPDM and polyamide, grey**

d1	d2	d3	Z1	C	D	G-kg	PU	Prod.No.
20	3/4"	3/4"	13	17	42	0.05	10.00	73404
25	1"	1"	15	21	45	0.07	10.00	73405
32	1 1/4"	1 1/4"	17	23	47	0.13	10.00	73406
40	1 1/2"	1 3/4"	19	23	48	0.20	10.00	73407
50	2"	2 1/4"	21	27	52	0.31	10.00	73409
63	2 1/2"	2 1/2"	23	31	53	0.38	10.00	73410
75	3"	3"	36	34	56	0.56	10.00	73411
90	4"	M113	32	40	62	1.03	10.00	73412



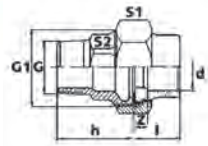
**IBG® adapter union, PVC/GTW galvanized, solvent socket - female thread, PN16**

d-G	PN	DN	G1	I1	I2	Z2	S1	S2	G-kg	PU	Prod.No.
20 - 1/2"	16	15	1"	19	20	5	37	27	0.09	40.00	71167
25 - 3/4"	16	20	1 1/4"	22	25	6	46	32	0.23	10.00	71168
32 - 1"	16	25	1 1/2"	25	28	6	52	38	0.30	10.00	71169
40 - 1 1/4"	16	32	2"	29	31	7	64	47	0.53	10.00	71170
50 - 1 1/2"	16	40	2 1/4"	34	34	7	72	53	0.54	10.00	71171
63 - 2"	16	50	2 3/4"	41	38	8	89	65	0.87	10.00	71172



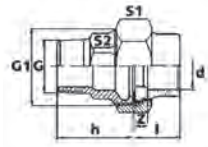
### IBG® adapter union, PVC/GTW galvanized, solvent socket – male thread, PN16

Produkt	PN	DN	G1	h	L	z	S1	S2	G-kg	PU	Prod.No.
20 - 1/2"	16	15	1"	40	19	5	37	23	0.15	10.00	71174
25 - 3/4"	16	20	1 1/4"	40	22	6	46	27	0.29	10.00	71175
32 - 1"	16	25	1 1/2"	50	25	6	52	38	0.33	10.00	71176
40 - 1 1/4"	16	32	2"	50	29	7	64	44	0.66	10.00	71177
50 - 1 1/2"	16	40	2 1/4"	65	34	7	72	53	0.72	10.00	71178
63 - 2"	16	50	2 3/4"	61	41	8	89	62	1.19	10.00	71179



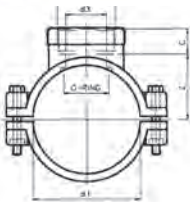
### IBG® adapter union, PVC/gun metal (rg5), solvent socket – male thread, PN16

d-G	PN	DN	G1	h	l	z	S1	S2	G-kg	PU	Prod.No.
16 - 3/8"	16	10	3/4"	22	17	5	30	28	0.11	10.00	71187
20 - 1/2"	16	15	1"	25	19	5	37	38	0.13	40.00	71188
25 - 3/4"	16	20	1 1/4"	27	22	6	46	44	0.20	25.00	71189
32 - 1"	16	25	1 1/2"	54	25	6	52	53	0.31	10.00	71190
40 - 1 1/4"	16	32	2"	54	29	7	64	62	0.50	10.00	71191
50 - 1 1/2"	16	40	2 1/4"	62	34	7	72	80	0.64	10.00	70990
63 - 2"	16	50	2 3/4"	69	41	8	89	61	1.07	10.00	71192



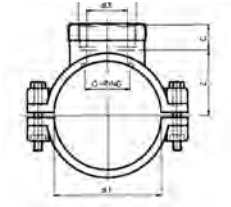
### IBG® adapter union, PVC/gun metal (rg5), solvent socket – female thread

d-G	PN	DN	G1	I1	I2	Z1	Z2	S1	S2	G-kg	PU	Prod. No.
16 - 3/8"	16	10	3/4"	17	22	5	7	30	22	0.01	40.00	71180
20 - 1/2"	16	15	1"	19	22	5	7	37	26	0.15	40.00	71181
25 - 3/4"	16	20	1 1/4"	22	27	6	8	46	30	0.18	25.00	71182
32 - 1"	16	25	1 1/2"	25	29,5	6	9	52	40	0.25	18.00	71183
40 - 1 1/4"	16	32	2"	29	33	7	9	64	50	0.41	10.00	71184
50 - 1 1/2"	16	40	2 1/4"	34	36	7	10	72	53	0.53	18.00	71185
63 - 2"	16	52	2 3/4"	41	42	8	10	89	65	0.83	12.00	71186



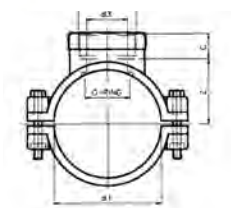
### IBG® clamp saddle type A, pipe female thread with stainless steel ring

d1-d2	d3	Z	C	D	E	G-kg	PU	Prod.No.
20 - 1/2"	10	16	18	2	2	0.11	100.00	73423
25 - 1/2"	12	19	18	2	2	0.12	100.00	73424
32 - 1/2"	14	23	18	2	2	0.15	100.00	73425
32 - 3/4"	18	23	19	2	2	0.16	100.00	73426
32 - 1"	23	23	22	2	2	0.17	100.00	73427
40 - 1/2"	14	27	18	4	4	0.22	80.00	73428
40 - 3/4"	18	27	19	4	4	0.22	80.00	73429
40 - 1"	23	27	22	4	4	0.23	80.00	73430
50 - 1/2"	14	32	18	4	4	0.25	60.00	73431
50 - 3/4"	18	32	19	4	4	0.25	60.00	73432
50 - 1"	23	32	22	4	4	0.26	60.00	73433
50 - 1 1/4"	26	32	24	4	4	0.28	60.00	73434



### IBG® clamp saddle type B, pipe female thread with stainless steel ring

d1-d2	d3	Z	C	D	E	G-kg	PU	Prod.No.
63 - 1/2"	14	39	18	4	4	0.29	40.00	71950
63 - 3/4"	18	39	19	4	4	0.30	40.00	73436
63 - 1"	23	39	22	4	4	0.30	40.00	73437
63 - 1 1/4"	26	39	24	4	4	0.33	30.00	73438
63 - 1 1/2"	33	39	24	4	4	0.33	30.00	73439
75 - 1/2"	14	46	18	6	4	0.41	25.00	73440
75 - 3/4"	18	46	19	6	4	0.42	25.00	73441
75 - 1"	23	46	22	6	4	0.42	25.00	73442
75 - 1 1/4"	26	46	24	6	4	0.44	25.00	73443
75 - 1 1/2"	33	46	24	6	4	0.45	25.00	73444
90 - 1/2"	14	53	18	6	4	0.46	25.00	73445
90 - 3/4"	18	53	19	6	4	0.46	25.00	73447
90 - 1"	23	53	22	6	4	0.47	25.00	73448
90 - 1 1/4"	26	53	24	6	4	0.48	25.00	73449
90 - 1 1/2"	33	53	28	6	4	0.49	25.00	70915
90 - 2"	42	53	22	6	4	0.52	25.00	73451
110 - 1"	23	64	22	6	4	0.58	20.00	73452
110 - 1 1/4"	26	64	24	6	4	0.59	20.00	73453
110 - 1 1/2"	33	64	24	6	4	0.60	20.00	73454
110 - 2"	42	64	28	6	4	0.63	20.00	73455
110 - 2 1/2"	60	64	33	6	4	0.67	20.00	73456
125 - 1"	23	71	22	6	4	0.64	15.00	73457
125 - 1 1/4"	26	71	24	6	4	0.65	15.00	73458
125 - 1 1/2"	33	71	24	6	4	0.66	15.00	73459
125 - 2"	42	71	28	6	4	0.70	15.00	73460
125 - 2 1/2"	60	71	33	6	4	0.72	15.00	73461



### IBG® clamp saddle type C, pipe female thread with stainless steel ring

d1-d2	d3	Z	C	D	E	B-kg	VE	Prod.No.
140 - 1 1/4"	26	80	24	6	6	0.87	10.00	75826
140 - 1 1/2"	35	80	26	6	6	1.00	1.00	73462
140 - 2"	42	80	28	6	6	0.91	10.00	73463
140 - 2 1/2"	60	80	33	6	6	0.94	10.00	73464
160 - 1"	23	90	33	6	6	1.00	10.00	73465
160 - 1 1/4"	26	90	24	6	6	1.01	10.00	73466
160 - 1 1/2"	33	90	24	6	6	1.01	10.00	73467
160 - 2"	42	90	28	6	6	1.03	10.00	73468
160 - 2 1/2"	60	94	33	6	6	1.07	10.00	73469
160 - 3"	76	94	36	6	6	1.16	10.00	73470



## IBG® FlexFit® adapter unions, clamp – solvent spigot

d-d1	DN	L	E	L1	L2	E	G-kg	PU	Prod.No.
50 × 50	40	104,5	42	31,5	69	89	0.22	30.00	71736A
50 × 11/2"	40	104,5	42	31,5	69	89	0.22	30.00	76488A
63 × 63	50	121,5	55	38,5	79	108	0.38	25.00	71905A
2"	50	121,5	55	38,5	79	108	0.38	25.00	76338A



## IBG® FlexFit® adapter unions, clamp – solvent socket

d-d2	DN	L	E	L1	L2	E1	G-kg	PU	Prod.No.
50 × 50	40	103,5	58	31,5	69	89	0.22	24.00	71737A
50 × 11/2"	40	103,5	58	31,5	69	89	0.23	24.00	76489A
63 × 63	50	120,5	71,6	38,5	79	108	0.37	25.00	71906A
63 × 2"	50	120,5	71,6	38,5	79	108	0.38	24.00	76339A



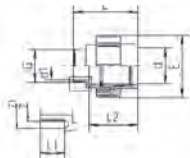
## IBG® FlexFit® adapter unions, BSP, clamp – female thread

d-G	DN	L	E	L1	L2	E1	G-kg	PU	Prod.No.
50 × 11/2"	40	103,5	58	31,5	69	89	0.24	24.00	71740A
63 × 2"	50	120,5	72	27,5	79	108	0.40	25.00	71911A



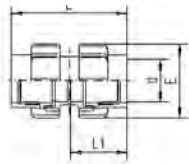
## IBG® FlexFit® adapter unions, BSP, clamp – male thread + O-ring

d-G	Type	DN	d1	L	E	L1	L2	Z	Z1	G-kg	PU	Prod.No.
50 × 11/2"	A	40	39	90,8	89	18	69	48	58	0.22	25.00	71739A
50 × 2"	B	40	49	189,4	108	23	69	60	69	0.28	24.00	71904A
63 × 2"	A	50	49	109,4	89	23	79	60	69	0.37	36.00	71910A



## IBG® FlexFit® adapter unions, NPT

d-G	Type	DN	d1	L	E	L1	L2	Z	Z1	G-kg	PU	Prod.No.
50 × 11/2"	A	40	39	90,8	89	18	69	48	58	0.23	25.00	76492



### IBG® FlexFit® double union, clamp – clamp

d-d1	DN	L	E	L1	G-kg	PU	Prod.No.
50 × 50	40	142	89	69	0.40	20.00	71738A
63 × 63	50	162,5	108	79	0.65	20.00	71907A



### IBG® FlexFit® adapter elbow 90°, clamp – solvent socket

d-d1	DN	I	L	E	L1	E1	Z	G-kg	PU	Prod.No.
50 × 50	40	57,5	97	56	69	89	26	0.25	25.00	71741A
50 × 1 1/2"	40	57,5	97	56	69	89	26	0.25	25.00	76493A
63 × 63	50	71	119	72	79	108	32,5	0.48	25.00	71908A
63 × 2"	50	71	119	72	79	108	32,5	0.45	25.00	76340A



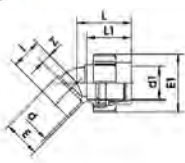
### IBG® FlexFit® adapter elbow 90°, clamp – female thread

d-G	DN	I	L	E	L1	E1	Z	G-kg	PU	Prod.No.
50 × 1 1/2" IG	40	57,5	97	56	69	89	26	0.25	25.00	76496
63 × 2" IG	50	71	119	72	79	108	32,5	0.46	25.00	76343A



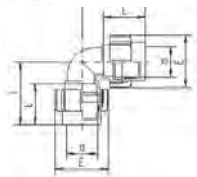
### IBG® FlexFit® adapter elbow 90°, BSP, clamp – male thread

d-G	DN	d1	L	E	L1	L2	L3	G-kg	PU	Prod.No.
50 × 1 1/2"	40	36	94,5	89	85	63	69	0.28	25.00	71903A
63 × 2"	50	48	119	108	85	56,3	79	0.63	25.00	76600A



### IBG® FlexFit® adapter elbow 45°, BSP, clamp – solvent socket

d-d1	DN	I	L	E	L1	E1	Z	G-kg	PU	Prod.No.
50 × 50	40	46,5	84	56,3	69	89	15	0.25	25.00	73506A



### IBG® FlexFit® elbow 90° , clamp – clamp

d-d1	DN	I	L	E	G-kg	PU	Prod.No.
50 × 50	40	105,5	69	89	0.43	10.00	71742A
63 × 63	50	124	79	108	0.73	10.00	71909A



### IBG® FlexFit® adapter tee 90° , clamp – solvent socket

Produkt	DN	I	L	E	L1	E1	Z	G-kg	PU	Prod.No.
50 × 50 × 50	40	57,5	9,7	56	69	89	26	0.27	18.00	71743A
1 1/2" × 50 × 1 1/2"	40	57,5	9,7	56	69	89	26	0.03	18.00	73402
63 × 63 × 63	50	71	119	71,6	79	108	32	0.57	16.00	71912A
2" × 63 × 2"	50	71	119	71,6	79	108	32	0.03	18.00	73403



### IBG® FlexFit® adapter tee 90° , clamp – clamp

d-d1-d2	DN	I	L	E	G-kg	PU	Prod.No.
50 × 50 × 50	40	105,5	69	89	0.64	8.00	71744A
63 × 63 × 63	50	124	79	108	1.08	10.00	71913A
50 × 63 × 50	40/50	105,5	69	89	0.79	8.00	76787A



### IBG® FlexFit® adapter tee 90° , clamp – solvent socket

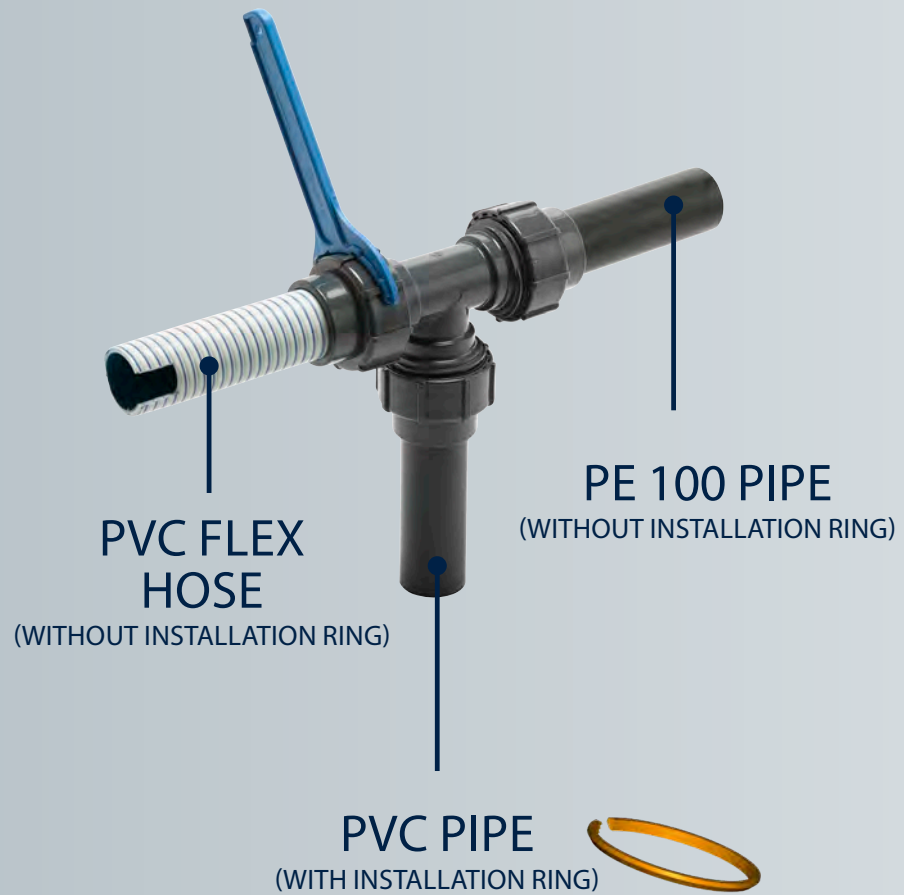
Produkt	DN	I	L	E	L1	E1	Z	G-kg	PU	Prod.No.
50 × 63 × 50	40/50	105,5	69	89	79,8	71,6	41,3	0.63	8.00	76788A



### IBG® FlexFit® assembly key, made of GFK

Product	G-kg	PU	Prod.No.
40	0.07	40.00	71635
50	0.06	10.00	71634





## GLUELESS CONNECTION

**IBG** FlexFit

### ENVIRONMENT FRIENDLY AND GLUELESS FLEXFIT® PVC FITTINGS

The easy-to-use Flex-Fit connections for flex hoses, PVC pipes and PE 100 pipe are high quality & precise plastic parts with many advantages.

To point out are fast assembly times as well as the independence of temperature and humidity during the construction of ponds, pools and irrigation systems.

Up to 25m length (50m on request) without connecting fittings means less glue connections, less risk of leaks and thus fast and safe installation.

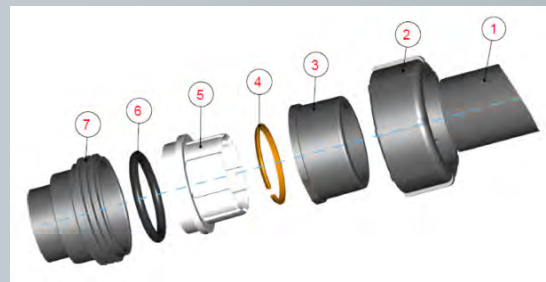
No use of cleaner and glue, no drying times, no health and safety protection are clear advantages for human and environment. The entire pipe connection system is 100% tight, immediately after right installation, and can be filled with water immediately after installation as well (max. 4 bar)

A little detail on the sideline - what is easy to assemble is also easy to dismantle.



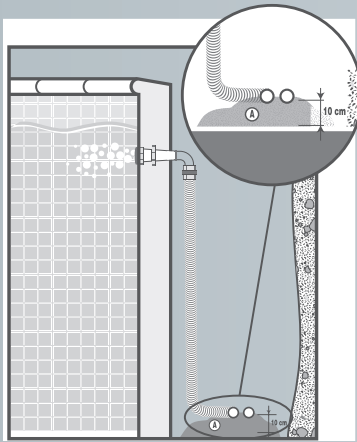
## TECHNICAL DETAILS

MATERIAL	PVC-U
SEALING	EPDM
DIMENSIONS	DN40 / DN50
CONNECTION TYPES	clamp – clamp clamp – solvent socket clamp – solvent spigot clamp – male thread clamp – female thread
HOSE CONNECTION	hose to hose pipe to hose hose to thread
OPERATION PRESSURE	PVC hose DN40 / DN50: PN4 (fittings)
	PE pipe: DN40: MOP8 DN50: MOP6
	PVC pipe: DN40: MOP8 DN50: MOP6



1. Pipe (PVC)
2. Union nut (PVC)
3. Clamping sleeve (PVC)
4. Brass ring (brass)
5. Clamping ring (POM)
6. O-ring (EPDM)
7. Connection (PVC)

## MAINTENANCE AT VERY LOW TEMPERATURES (FROST)



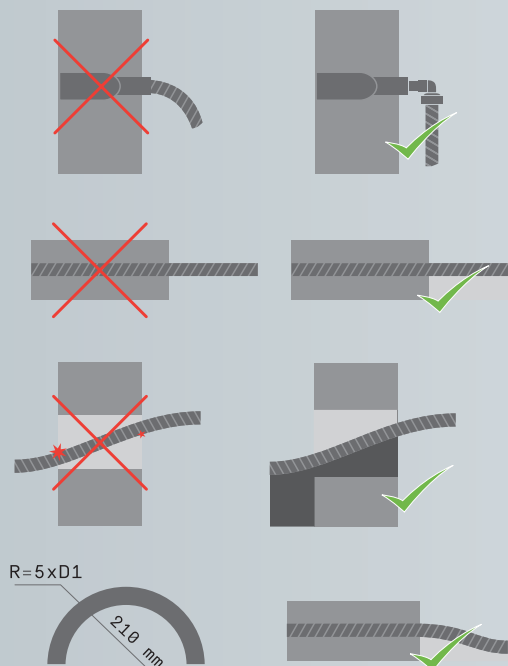
To avoid breakage in the piping system at frost please drain the piping! Normally part of the medium remains in the piping. Mostly no problem in case air can escape through an opened valve. If there is no open valve breakage is nearly inevitable. When the medium freezes in a flexible PVC hose, the flexibility of the hose in most cases prevents the hose from damage. Best solution is to drain the piping system in time!

## CHARACTERISTICS OF UNIONS AT INGROUND INSTALLATION

or FlexFit the functions "tightening" and "clamping" are different. The safe tightening remains the same at different tensile load, the clamping is getting stronger.

## RECOMMENDATIONS FOR THE CORRECT INSTALLATION OF PRAHER/IBG FLEX FITTINGS AND FLEX HOSES

- » Avoid extreme tension on the pipe (lowest possible bend radius)
- » D50 FlexFit® hose, min. bend radius  $R=5 \times D1$
- » Install hose in sand bed or protection tube
- » Avoid contact with sharp edges, hose will move under pressure
- » Max. pressure: 4 bar (20° C water)
- » Max. temperature: + 60° C water

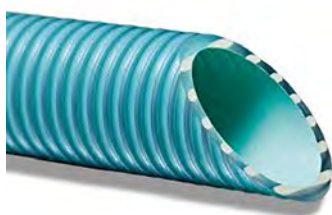




## Peraqua FlexFit® flexible PVC hose, grey

With reinforced spiral

Product	PN	Roll	G-kg	PU	Prod.No.
20 × 2,0 mm	7	25 m	0.15	25.00	71708
25 × 2,5 mm	7	25 m	0.24	25.00	71709
32 × 3,0 mm	7	25 m	0.36	25.00	71710
40 × 3,0 mm	5	25 m	0.48	25.00	71711
50 × 4,0 mm	5	25 m	0.71	25.00	71712
63 × 4,0 mm	5	25 m	1.00	25.00	71713
75 × 4,0 mm	4	25 m	1.40	25.00	73507
90 × 8,0 mm	4	25 m	1.74	25.00	74043



## Peraqua FlexFit® flexible PVC hose B-active, reinforced, aqua

Chlorine resistant, high banding radius, resistant to squeezing and deforming

Product	G-kg	PU	Prod.No.
Peraqua PVC-FLEX HOSE D=50 reinforced, B-active,50-42, l=25m, ISO 1307:2008	0.74	25.00	740129
Peraqua PVC-FLEX HOSE D=63, reinforced, B-active, 63-55, l=25 m, ISO 1307:2008	0.96	25.00	740130



The spiral with D-Shape cross-section is extremely resistant to crushing (up to 34 kN/m<sup>2</sup>). The lining of the rigid spiral acts as a barrier that prevents premature embrittlement.



The CDS (Chlorine Defence System) film offers extensive protection against high-chlorine water.

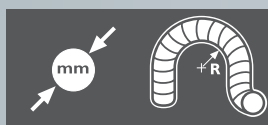
## INSTALLATION AND STORAGE RECOMMENDATIONS PRAHER/IBG FLEX HOSE



PRAHER/IBG Flex hoses achieve highest quality standards. Regular control of the production according to is constantly EN ISO 3994 therefore the tolerances according to DIN/ISO to the Praher/IBG fittings isare guaranteed.

For correct hauling and durability please follow the recommendations:

- » Immediate check after delivery and feedback in case of deformation due to
- » Hauling of PVC Flex hose in sand bed (10 cm beyond and above) or double pipe
- » Consideration of the max. bend radius ( $R = 5 \times D1$ )
- » Please consider the material behaviour of PVCu according to your specific application parameter (pressure, temperature and mechanical stress)
- » Glueing of Flex hose due to optimal tolerances between PRAHER/IBG Flex hose and PRAHER/IBG fittings for glueing use of WDF05, product code 20223 solvent cement and cleaner recommended only
- » Installation with IBG flex fittings: Well proven “glue-less” connection with the wide range of Flex fitting system by PRAHER/IBG. The best solution for quick and smooth handling of the Flex hose
- » We recommend to keep Flex fitting accessible (do not embed in concrete or beneath the pool) • Pressure test of the pipe system before start up with water, pressure of 2 bar. Documentation by pressure test printout (necessary in case of claim)
- » Hauling below the frost line, installation and operation at a temperature of more than 0°C, draining of pipes during winter.
- » Temperature resistance 0° - 50°C acc. to pressure and temperature diagram. Max working pressure 4 bar at 20°C
- » In case of claim immediate information indicating serial number of hose,
- » Guarantee/warranty max. 2 years.



25	100
32	100
40	130
50	165
63	220

Архангельск (8182)63-90-72  
Астана (7172)727-132  
Астрахань (8512)99-46-04  
Барнаул (3852)73-04-60  
Белгород (4722)40-23-64  
Брянск (4832)59-03-52  
Владивосток (423)249-28-31  
Волгоград (844)278-03-48  
Вологда (8172)26-41-59  
Воронеж (473)204-51-73  
Екатеринбург (343)384-55-89  
Иваново (4932)77-34-06

Ижевск (3412)26-03-58  
Иркутск (395)279-98-46  
Казань (843)206-01-48  
Калининград (4012)72-03-81  
Калуга (4842)92-23-67  
Кемерово (3842)65-04-62  
Киров (8332)68-02-04  
Краснодар (861)203-40-90  
Красноярск (391)204-63-61  
Курск (4712)77-13-04  
Липецк (4742)52-20-81  
Киргизия (996)312-96-26-47

Магнитогорск (3519)55-03-13  
Москва (495)268-04-70  
Мурманск (8152)59-64-93  
Набережные Челны (8552)20-53-41  
Нижний Новгород (831)429-08-12  
Новокузнецк (3843)20-46-81  
Новосибирск (383)227-86-73  
Омск (3812)21-46-40  
Орел (4862)44-53-42  
Оренбург (3532)37-68-04  
Пенза (8412)22-31-16  
Казахстан (772)734-952-31

Пермь (342)205-81-47  
Ростов-на-Дону (863)308-18-15  
Рязань (4912)46-61-64  
Самара (846)206-03-16  
Санкт-Петербург (812)309-46-40  
Саратов (845)249-38-78  
Севастополь (8692)22-31-93  
Симферополь (3652)67-13-56  
Смоленск (4812)29-41-54  
Сочи (862)225-72-31  
Ставрополь (8652)20-65-13

Сургут (3462)77-98-35  
Тверь (4822)63-31-35  
Томск (3822)98-41-53  
Тула (4872)74-02-29  
Тюмень (3452)66-21-18  
Ульяновск (8422)24-23-59  
Уфа (347)229-48-12  
Хабаровск (4212)92-98-04  
Челябинск (351)202-03-61  
Череповец (8202)49-02-64  
Ярославль (4852)69-52-93

<https://ibg.nt-rt.ru/> || [bfg@nt-rt.ru](mailto:bfg@nt-rt.ru)