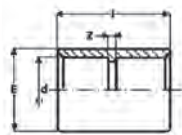
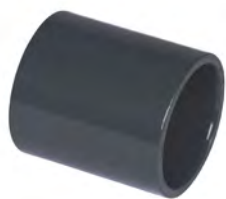
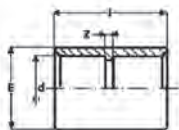
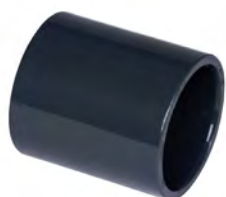


IBG® socket solvent socket, grey



d	PN	DN	I	Z	E	G-kg	PU	Prod.No.
10	16	6	27	3	16	0.01	300.00	70732
12	16	8	27	3	18	0.01	250.00	70733
16	16	10	32	3	22,5	0.01	200.00	70734
20	16	15	35,8	3	27,3	0.01	200.00	70735
25	16	20	41,5	3	31	0.02	200.00	70736
32	16	25	47,4	3	39	0.03	100.00	70737
40	16	32	55	3	48,1	0.04	150.00	70738
50	16	40	65,8	3	60	0.07	60.00	70739
63	16	50	80	3	75,1	0.14	50.00	70740
75	16	65	93	4	90	0.23	50.00	70741
90	16	80	106	5	105,5	0.38	30.00	70742
110	16	100	145	7	145	0.64	20.00	70743
125	16	110	145	7	145	0.95	12.00	71056
140	16	125	160	8	163	1.44	8.00	70744
160	16	150	181,5	8	189	2.07	6.00	70745
200	10	175	222	12	232	3.30	1.00	70746
225	10	200	249	11	262	4.00	1.00	70747
250	10	250	270	8	286	5.81	1.00	71057
280	10	250	304	10	320	8.70	1.00	71058
315	10	300	342	12	355	10.78	1.00	71060



IBG® socket solvent socket, black (for solar systems), PN16

d	PN	DN	I	Z	E	G-kg	PU	Prod.No.
50	16	40	65,8	3	60	0.08	60.00	70887

Архангельск (8182)63-90-72
 Астана (7172)727-132
 Астрахань (8512)99-46-04
 Барнаул (3852)73-04-60
 Белгород (4722)40-23-64
 Брянск (4832)59-03-52
 Владивосток (423)249-28-31
 Волгоград (844)278-03-48
 Вологда (8172)26-41-59
 Воронеж (473)204-51-73
 Екатеринбург (343)384-55-89
 Иваново (4932)77-34-06

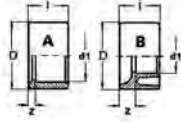
Ижевск (3412)26-03-58
 Иркутск (395)279-98-46
 Казань (843)206-01-48
 Калининград (4012)72-03-81
 Калуга (4842)92-23-67
 Кемерово (3842)65-04-62
 Киров (8332)68-02-04
 Краснодар (861)203-40-90
 Красноярск (391)204-63-61
 Курск (4712)77-13-04
 Липецк (4742)52-20-81
 Киргизия (996)312-96-26-47

Магнитогорск (3519)55-03-13
 Москва (495)268-04-70
 Мурманск (8152)59-64-93
 Набережные Челны (8552)20-53-41
 Нижний Новгород (831)429-08-12
 Новокузнецк (3843)20-46-81
 Новосибирск (383)227-86-73
 Омск (3812)21-46-40
 Орел (4862)44-53-42
 Оренбург (3532)37-68-04
 Пенза (8412)22-31-16
 Казахстан (772)734-952-31

Пермь (342)205-81-47
 Ростов-на-Дону (863)308-18-15
 Рязань (4912)46-61-64
 Самара (846)206-03-16
 Санкт-Петербург (812)309-46-40
 Саратов (845)249-38-78
 Севастополь (8692)22-31-93
 Симферополь (3652)67-13-56
 Смоленск (4812)29-41-54
 Сочи (862)225-72-31
 Ставрополь (8652)20-65-13

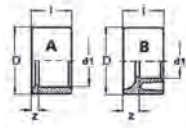
Сургут (3462)77-98-35
 Тверь (4822)63-31-35
 Томск (3822)98-41-53
 Тула (4872)74-02-29
 Тюмень (3452)66-21-18
 Ульяновск (8422)24-23-59
 Уфа (347)229-48-12
 Хабаровск (4212)92-98-04
 Челябинск (351)202-03-61
 Череповец (8202)49-02-64
 Ярославль (4852)69-52-93

<https://ibg.nt-rt.ru/> || bfg@nt-rt.ru



IBG® reductions, short, solvent spigot / solvent socket, grey

D-d1	PN	DN x DN1	I	Z	Type	G-kg	PU	Prod.No.
	16	10-8	14	2	A	0.01	300.00	70748
20-16	16	15-10	16	2	A	0.01	300.00	70749
25-12	16	20-8	19	2	B	0.01	10.00	71564
25-16	16	20-10	19	4,5	A	0.01	200.00	70750
25-20	16	20-15	19	2,5	A	0.01	200.00	70751
32-16	16	25-10	22	8	B	0.02	250.00	70752
32-20	16	25-15	22	6	B	0.01	200.00	70753
32-25	16	25-20	22	3,5	A	0.01	200.00	70754
40-16	16	32-10	26	12	B	0.02	150.00	70755
40-20	16	32-15	26	10	B	0.02	150.00	70756
40-25	16	40-20	26	7	A	0.02	150.00	70757
40-32	16	32-25	26	4	A	0.02	150.00	70758
50-20	16	40-15	31	15	B	0.04	170.00	70499
50-25	16	40-20	31	12,5	B	0.04	170.00	70498
50-32	16	40-25	31	9	B	0.04	170.00	70497
50-40	16	40-32	31	5	A	0.03	170.00	70496
63-25	16	50-20	38	19	B	0.05	140.00	70503
63-32	16	50-25	38	15,5	B	0.06	140.00	70502
63-40	16	50-32	38	11,5	B	0.06	140.00	70501
63-50	16	50-40	38	6,5	A	0.06	140.00	70500
75-32	16	65-25	44	21,5	B	0.09	80.00	70759
75-40	16	65-32	44	19	B	0.08	80.00	70760
75-50	16	65-40	44	12,5	B	0.09	80.00	70761
75-63	16	75-50	44	8	A	0.18	80.00	70762
90-40	16	80-32	51	25	B	0.16	40.00	70763
90-50	16	80-40	51	20	B	0.18	40.00	70764
90-63	16	80-50	51	13,5	B	0.16	40.00	70765
90-75	16	80-65	51	7,5	A	0.14	40.00	70766
110-50	16	100-40	61	30	B	0.27	30.00	70767
110-63	16	100-50	61	23,5	B	0.29	30.00	70768
110-75	16	100-65	61	17,5	B	0.30	30.00	70769
110-90	16	100-80	61	10	A	0.26	30.00	70770
125-75	16	110-61	69	25	B	0.41	24.00	72063
125-90	16	110-80	69	18	B	0.42	24.00	71079
125-110	16	110-100	69	8	A	0.29	24.00	71080
140-75	16	125-65	76	32	B	0.58	15.00	70771
140-90	16	125- 80	76	25	B	0.63	15.00	70590
140-110	16	125-100	76	15	A	0.62	15.00	70772
140-125	16	125-110	76	15	A	0.34	15.00	70451
160-90	16	150- 80	86	35	B	0.88	10.00	70592
160-110	16	150-100	86	25	B	0.84	10.00	70591
160-125	10	150-110	86	17	B	0.99	2.00	71957
160-140	10	150-125	86	10	A	0.56	10.00	70773
200-110	10	175-100	106	46	B	2.11	10.00	70774
200-125	10	175-110	106	36	B	2.14	10.00	70775
200-140	10	175-125	106	29	B	2.04	10.00	70776
200-160	10	175-150	106	31	B	1.76	10.00	70777
225-110	10	200-100	106	59	B	2.70	3.00	70778
225-125	10	200-110	119	50	B	2.78	3.00	72064
225-140	10	200-125	108	40,5	B	2.81	3.00	70779
225-160	10	200-150	118	32,5	B	2.75	3.00	70780
225-200	10	200-175	118	12	A	1.57	3.00	70636
250-125	10	250-110	131	62	B	3.46	3.00	72065
250-140	10	250-125	131	55	B	3.39	3.00	72066
250-160	10	250-150	131	46	B	3.58	3.00	71081
250-200	10	250-175	131	26	A	3.42	3.00	71082
250-225	10	250-200	131	12	A	1.89	3.00	71083



D-d1	PN	DN x DN1	I	Z	Type	G-kg	PU	Prod.No.
280-200	10	250-175	146	40	B	4.66	1.00	71084
280-225	10	250-200	146	27	B	4.66	1.00	71085
280-250	10	250-250	146	15	A	2.77	1.00	71086
315-160	6	300-150	163	86	B	5.52	1.00	72067
315-200	6	300-175	163	57	B	5.77	1.00	71087
315-225	6	300-200	163	44	B	5.95	1.00	71088
315-250	6	300-250	163	32	B	6.79	1.00	71089
315-280	6	300-250	163	17	A	3.98	1.00	71090
355-315	6	315-300	184	20	B	5.77	1.00	72086
400-250	6	350-250	206	75	B	11.54	1.00	72069
400-315	6	370-300	206	42	B	13.67	1.00	71091
400-355	6	370-300	206	21	A	7.98	1.00	71092



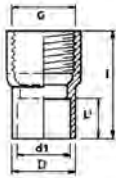
IBG® reductions, short, solvent d50/d63 female thread

Produkt	G-kg	PU	Prod.No.
Reduction short PVC grey solvent D/female thread d50 - 1/2"	0.06	100.00	170032
Reduction short PVC grey solvent D/female thread - d50-3/4"	0.06	100.00	170033
Reduction short PVC grey solvent D/female thread d63 - 1/2"	0.09	100.00	170030
Reduction short PVC grey solvent D/female thread - d63-3/4"	0.10	100.00	170031



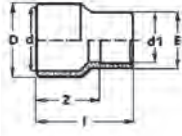
Teflon strip

Produkt	G-kg	PU	Prod.No.
Teflon tape 12 x 0,075 x 12 mm	0.01	1.00	71940



IBG® reductions, short, solvent spigot / female thread, PN10

D(d1)-G	PN	DN	I	I1	Tpye	Sw	G-kg	PU	Prod.No.
16 - 1/4"	10	10	22	14	B	19	0.01	250.00	71247
20 - 1/4"	10	15	24	16	B	22	0.01	250.00	71256
20 - 3/8"	10	15	24	16	B	22	0.01	250.00	71257
25 - 3/8"	10	20	27	19	B	27	0.01	250.00	71258
25 - 1/2"	10	20	27	19	B	27	0.01	250.00	70970
32 - 1/2"	10	25	30	22	B	36	0.03	250.00	71259
32 - 3/4"	10	25	30	22	B	36	0.02	250.00	71260
40 - 1/2"	10	32	37	26	B	46	0.04	200.00	71261
40 - 3/4"	10	32	37	26	B	46	0.04	100.00	71262
40 - 1"	10	32	37	26	B	46	0.03	100.00	71263
50 - 1/2"	10	40	43	31	B	55	0.07	100.00	71264
50 - 3/4"	10	40	43	31	B	55	0.07	100.00	71265
50 - 1"	10	40	43	31	B	55	0.07	100.00	71266
50 - 1 1/4"	10	40	43	31	B	55	0.05	100.00	71267
50/40 - 1 1/2"	10	40	81	26	A	×	0.13	100.00	71268
63 - 1 1/4"	10	51	51	38	B	65	0.11	100.00	71269
63 - 1 1/2"	10	50	51	38	B	65	0.10	100.00	71270
63 /50 - 2"	10	50	98	32	C	80	0.32	50.00	71271
75 - 1 1/4"	10	63	57	44	B	80	0.17	50.00	71272
75 - 1 1/2"	10	65	57	44	B	80	0.16	50.00	71273
75 - 2"	10	65	57	44	B	80	0.15	50.00	71274
75 /63 - 2 1/2"	10	65	83	38	A	×	0.38	25.00	71275
90/75 - 2"	10	80	71	51	B	95	0.28	25.00	71276
90/75 - 3"	10	80	97	51	A	×	0.31	25.00	71277
110/90 - 2"	10	100	93	61	B	115	0.52	25.00	71278
110/90 - 2 1/2"	10	100	93	61	B	115	0.48	25.00	71279
110 - 3"	10	100	83	61	B	115	0.45	25.00	71280
125 - 3"	10	110	94	69	B	138	0.65	5.00	71281
125 - 4"	10	110	94	69	B	138	0.45	5.00	71282



IBG® reductions, long, solvent socket / solvent spigot / solvent socket, PN16, grey

D-d-d1	PN	DN	I	Z	E	G-kg	PU	Prod.No.
10-8-6	16	6-5-5	26	14	10	0.01	250.00	70781
12-10-8	16	8-5-6	26	14	12	0.01	250.00	70782
16-12-8	16	10-8-5	32	18	11	0.01	250.00	70783
16-12-10	16	10-8-6	32	18	14	0.01	250.00	70784
20-16-10	16	15-10-6	32	18	14	0.01	100.00	70785
20-16-12	16	15-10-8	33	21	19	0.01	100.00	70786
25-20-16	16	20-15-10	39	25	23	0.01	100.00	70787
25-20-20	16	20-15-15	42	25	25	0.01	100.00	70789
32-25-16	16	25-20-10	44	30	23	0.02	100.00	70459
32-25-20	16	25-20-15	45	30	28	0.02	100.00	70790
32-25-25	16	25-20-20	49	30	32	0.02	100.00	70791
40-32-16	16	32-25-10	50	36	28	0.02	110.00	70792
40-32-20	16	32-25-15	52	36	28	0.03	110.00	70793
40-32-25	16	32-25-20	55	36	33	0.03	110.00	70794
40-32-32	16	32-25-25	58	36	40	0.04	110.00	70795
50-40-20	16	40-32-15	60	44	28	0.05	50.00	70796
50-40-25	16	40-32-20	63	44	33	0.05	50.00	70458
50-40-32	16	40-32-25	66	44	42	0.07	50.00	70797
50-40-40	16	40-32-32	70	44	50	0.07	50.00	70798
63-50-25	16	50-40-20	74	54	33	0.09	50.00	70799
63-50-32	16	50-40-25	73	54	42	0.10	50.00	70800
63-50-40	16	50-40-32	81	54	51,5	0.11	40.00	70801
63-50-50	16	50-40-40	81	54	65,1	0.14	50.00	70802
75-63-32	16	65-50-25	84	62	42	0.13	50.00	70803
75-63-40	16	65-50-32	92	62	52,4	0.14	50.00	70804
75-63-50	16	65-50-50	93	62	63,5	0.16	50.00	70805
75-63-63	16	65-50-50	100	62	75	0.19	50.00	70806
90-75-40	16	80-65-32	100	74	51,5	0.22	20.00	70807
90-75-50	16	80-65-40	105	74	63,5	0.24	20.00	70808
90-75-63	16	80-65-50	112	74	76,5	0.27	20.00	70809
90-75-75	16	80-65-65	118	74	90	0.32	10.00	70810
110-90-50	16	100-80-40	112	81	60	0.44	30.00	70811
110-90-63	16	100-80-50	112	74	75	0.44	30.00	70639
110-90-75	16	100-80-65	112	68	92	0.46	12.00	70812
125-110-63	16	110-100-50	131	93	77	0.46	5.00	70813
125-110-75	16	110-100-65	131	87	92	0.51	5.00	70814
125-110-90	16	110-100-80	131	80	106	0.53	5.00	70815
140-125-75	16	125-110-65	146	102	92	0.63	5.00	70640
140-125-90	16	125-110-80	146	95	106	0.65	5.00	70788
140-125-110	16	125-110-100	146	85	92	0.71	5.00	70641



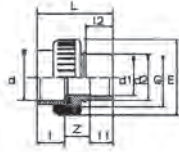
IBG® adapter union solvent socket , grey

d	PN	DN	E	G	L	I	I1	Z	G-kg	PU	Prod.No.
10	16	6	31	5/8"	37	15	22	13	0.03	200.00	72114
12	16	8	29	5/8"	38	15	22	13	0.02	200.00	71116
16	16	10	34	3/4"	41	17	24	13	0.03	100.00	70682
20	16	15	42	1"	45	19	26	13	0.04	100.00	70513
25	16	20	53	1 1/4"	51	22	29	13	0.06	100.00	70683
32	16	25	58	1 1/2"	58	25	33	13	0.09	100.00	70514
40	16	32	73	2"	67	29	38	15	0.15	60.00	70515
50	16	40	83	2 1/4"	80	34	45	17	0.19	32.00	70684
63	16	50	103	2 3/4"	99	42	56	21	0.36	20.00	70685
75	10	65	118	3 1/2"	108	47	62	20	0.60	20.00	70686
90	10	80	135	4"	124	56	68	22	0.75	20.00	70687
110	10	100	163	5"	138	66	72	16	1.16	6.00	70688



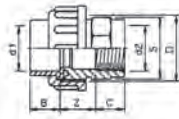
IBG® adapter union solvent socket for transition ISO/ASTM pipe to metric pipe, grey

d-D	PN	DN	E	G	L	I	I1	Z	G-kg	PU	Prod.No.
1/2" ISO/ASTM-20 mm	16	15	42	1"	45	19	26	13	0.09	10.00	72115
3/4" ISO-25 mm	16	20	53	1 1/4"	51	22	29	13	0.08	10.00	72116
3/4" ASTM-25 mm	16	20	53	1 1/4"	51	22	29	13	0.08	10.00	72117
1" ISO-32 mm	16	25	58	1 1/2"	58	25	33	13	0.10	18.00	72118
1" ASTM-32 mm	16	25	58	1 1/2"	58	25	33	13	0.09	20.00	72119
1 1/4" ISO-40 mm	16	32	73	2"	67	29	38	14	0.17	10.00	72120
1 1/4" ASTM-40 mm	16	32	73	2"	67	29	38	14	0.17	10.00	72121
1 1/2" ASTM/ISO-50 mm	16	40	83	2 1/4"	80	34	45	17	0.20	32.00	72122
2" ASTM/ISO-63 mm	16	50	103	2 3/4"	99	42	56	21	0.37	20.00	72123



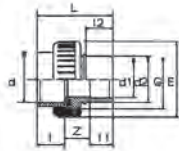
IBG® adapter union reducing pipe solvent socket / solvent socket / solvent spigot, PN16, grey

d-d1-d2	PN	DN	G	L	I	L1	L2	G-kg	PU	Prod.No.
50 - 40/50	16	40	2 1/4"	86	34	x	x	0.21	90.00	71313
63 - 50/63	16	50	2 3/4"	112	42	37	85	0.37	90.00	71314



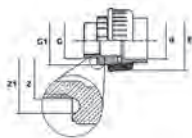
IBG® adapter union solvent socket / female thread, type 1

d-G	PN	DN	L	G1	I	I1	Z	E	G-kg	PU	Prod.No.
12 - 1/4"	10	6	46	5/8"	12	24	13	35	0.02	10.00	72601
16 - 3/8"	10	10	42	3/4"	18	24	13	37	0.03	20.00	71214
20 - 1/2"	10	15	46	1"	19	26	13	43	0.04	60.00	71215
25 - 3/4"	10	20	51	1 1/4"	22	29	13	53	0.06	90.00	71216
32 - 1"	10	25	58	1 1/2"	25	33	13	60	0.09	100.00	71217
40 - 1 1/4"	10	32	67	2"	29	38	15	74	0.15	60.00	71218
50 - 1 1/2"	10	40	80	2 1/4"	34	45	17	83	0.21	32.00	71219
63 - 2"	10	50	98	2 3/4"	41	56	21	103	0.39	20.00	71220



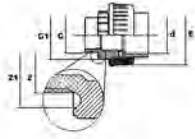
IBG® adapter union solvent socket / male thread, type B, grey

d-G	PN	DN	G1	L	Z1	Z2	E	G-kg	PU	Prod.No.
12 - 1/4"	10	6	5/8"	12	9	5	33	0.03	50.00	72169
16 - 3/8"	10	10	3/4"	17	9	5	35	0.04	50.00	71240
20 - 1/2"	10	15	1"	19	10	5	43	0.04	100.00	71241
25 - 3/4"	10	20	1 1/4"	22	11	6	53	0.08	50.00	71242
32 - 1"	10	25	1 1/2"	25	12	6	60	0.10	80.00	71243
40 - 1 1/4"	10	32	2"	29	14	7	74	0.18	50.00	71244
50 - 1 1/2"	10	40	2 1/4"	34	16	7	83	0.19	40.00	71245
63 - 2"	10	50	2 3/4"	41	18	8	103	0.38	20.00	71246



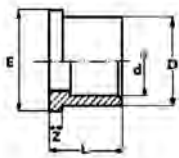
IBG® adapter union solvent socket / male thread with O-ring sealing on thread, grey, PN10

d-G	PN	DN	G1	L	Z1	Z2	G-kg	PU	Prod.No.
50 - 1 1/2"	10	40	2 1/4"	48	58	83	0.22	60.00	71973
50 - 2"	10	40	2 1/4"	60	70	83	0.20	40.00	71975
63 - 2"	10	50	2 3/4"	60	70	103	0.40	35.00	71977



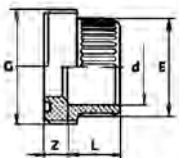
IBG® adapter union solvent socket / male thread with O-ring sealing on thread, white, PN10

d-G	PN	DN	G1	L	Z1	Z2	G-kg	PU	Prod.No.
50 - 1 1/2"	10	40	2 1/4"	48	58	83	0.22	60.00	71974
50 - 2"	10	40	2 1/4"	60	70	83	0.22	40.00	71976



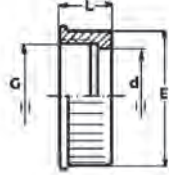
IBG® union end for unions, spare part union

d	PN	DN	L	Z	D	E	G-kg	PU	Prod.No.
16	16	10	17	5	22	24	0.01	50.00	71142
20	16	15	19	5	27,5	30,1	0.01	280.00	70560
25	16	20	22	6	36	38,8	0.01	200.00	70561
32	16	25	25	6	41,5	44,7	0.02	300.00	70562
40	16	32	29	7	53	56,5	0.04	250.00	70563
50	16	40	34	7	59	62,6	0.04	250.00	70564
63	16	50	41	8	74	78,4	0.07	100.00	70565
75	16	65	44	9	92,5	97,2	0.17	25.00	71117
90	16	80	51	10	105	110	0.23	5.00	71118
110	10	100	61	12	129	134,4	0.32	5.00	71119



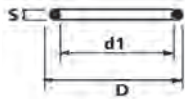
IBG® union bush for unions

d	PN	DN	G	L	Z	E	G-kg	PU	Prod.No.
16	16	10	3/4	14	10	22	0.02	50.00	71120
20	16	15	1	16	15	26	0.01	100.00	71121
25	16	20	1 1/4	19	20	33,3	0.02	50.00	71122
32	16	25	1 1/2	22	25	41,5	0.03	80.00	70991
40	16	32	2	28	32	51	0.05	20.00	71123
50	16	40	2 1/4	33	40	61	0.06	45.00	71124
63	16	50	2 3/4	42	50	76,5	0.13	35.00	71125
75	10	65	3 1/2	44	31	96	0.22	10.00	71126
90	10	80	4	51	35	109	0.39	10.00	71127
110	10	100	5	61	41	133	0.61	10.00	71128



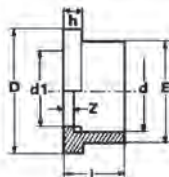
IBG® union nut for unions

d	PN	DN	d	L	E	G-kg	PU	Prod.No.
3/4"-16	16	10	22,1	21	35	0.02	200.00	70462
1"-20	16	15	27,6	23	43	0.02	150.00	70566
1 1/4"-25	16	20	36,1	25	53	0.03	100.00	70567
1 1/2"-32	16	25	41,6	27	60	0.04	120.00	70568
2"-40	16	32	53,1	30	74	0.06	75.00	70569
2 1/4"-50	16	40	59,1	32	83	0.08	60.00	70570
2 3/4"-63	16	50	74,1	37,5	103	0.15	50.00	70571
3 1/2"-75	16	65	90	43	120	0.20	25.00	71129
4"-90	16	80	108	45	135	0.36	6.00	71130
5"-110	10	100	130	51	160	0.39	2.00	71131



IBG® O-ring for union bushes, EPDM

d	DN	D	d1	S	G-kg	PU	Prod.No.
16	10	20,84	15,6	2,62	0.01	100.00	71428
20	15	27,36	20,3	3,53	0.01	100.00	50484
25	20	35,26	28,2	3,53	0.01	1.00	50008
32	25	40,06	33	3,53	0.01	1.00	50009
40	32	51,36	40,7	5,34	0.01	100.00	50487
50	40	57,76	47,1	5,34	0.01	100.00	50216
63	50	70,46	59,8	5,34	0.01	100.00	50272
75	65	86,23	75,57	5,33	0.01	1.00	50298a
90	80	98,93	88,27	5,33	0.01	50.00	71432
110	100	124,33	113,67	5,33	0.01	50.00	71433



IBG® flange adapter grooved

d	PN	DN	I	Z	d1	h	E	D	G-kg	PU	Prod.No.
63	16	50	41	3	57	9	76	90	0.10	60.00	71098
75	16	65	47	3	69	10	90	106	0.16	60.00	70148
90	10	80	56	5	82	11	108	125	0.27	50.00	71099
110	10	100	66	5	102	12	131	150	0.43	30.00	71100
125	10	110	72	5	120	18	147	170	0.64	10.00	70633
140	10	125	80	5	132	14	165	188	0.77	15.00	71101
160	10	150	91	5	152	16	188	213	1.11	12.00	71102
200	10	175	112	6	193	18	228	248	1.15	3.00	70637
225	10	200	119	6	217	25	248	274	1.97	4.00	71103

Архангельск (8182)63-90-72
 Астана (7172)727-132
 Астрахань (8512)99-46-04
 Барнаул (3852)73-04-60
 Белгород (4722)40-23-64
 Брянск (4832)59-03-52
 Владивосток (423)249-28-31
 Волгоград (844)278-03-48
 Вологда (8172)26-41-59
 Воронеж (473)204-51-73
 Екатеринбург (343)384-55-89
 Иваново (4932)77-34-06

Ижевск (3412)26-03-58
 Иркутск (395)279-98-46
 Казань (843)206-01-48
 Калининград (4012)72-03-81
 Калуга (4842)92-23-67
 Кемерово (3842)65-04-62
 Киров (8332)68-02-04
 Краснодар (861)203-40-90
 Красноярск (391)204-63-61
 Курск (4712)77-13-04
 Липецк (4742)52-20-81
 Киргизия (996)312-96-26-47

Магнитогорск (3519)55-03-13
 Москва (495)268-04-70
 Мурманск (8152)59-64-93
 Набережные Челны (8552)20-53-41
 Нижний Новгород (831)429-08-12
 Новокузнецк (3843)20-46-81
 Новосибирск (383)227-86-73
 Омск (3812)21-46-40
 Орел (4862)44-53-42
 Оренбург (3532)37-68-04
 Пенза (8412)22-31-16
 Казахстан (772)734-952-31

Пермь (342)205-81-47
 Ростов-на-Дону (863)308-18-15
 Рязань (4912)46-61-64
 Самара (846)206-03-16
 Санкт-Петербург (812)309-46-40
 Саратов (845)249-38-78
 Севастополь (8692)22-31-93
 Симферополь (3652)67-13-56
 Смоленск (4812)29-41-54
 Сочи (862)225-72-31
 Ставрополь (8652)20-65-13

Сургут (3462)77-98-35
 Тверь (4822)63-31-35
 Томск (3822)98-41-53
 Тула (4872)74-02-29
 Тюмень (3452)66-21-18
 Ульяновск (8422)24-23-59
 Уфа (347)229-48-12
 Хабаровск (4212)92-98-04
 Челябинск (351)202-03-61
 Череповец (8202)49-02-64
 Ярославль (4852)69-52-93

<https://ibg.nt-rt.ru/> || bfg@nt-rt.ru