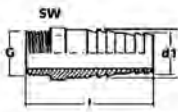


### IBG® double nipple, male thread, PN10, grey

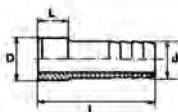
G	PN	DN	I	SW	G-kg	PU	Prod.No.
1/4"	10	6	32	19	0.01	100.00	72162
3/8"	10	10	34	22	0.01	100.00	71193
1/2"	10	15	42	24	0.01	100.00	70966
3/4"	10	20	47	30	0.02	100.00	70930
1"	10	25	53	36	0.03	100.00	71194
1 1/4"	10	32	56	46	0.07	100.00	71195
1 1/2"	10	40	57	55	0.07	100.00	71196
2"	10	50	68	65	0.11	100.00	71197
3/8"- 1/4"	10	x	36	24	0.01	50.00	71198
1/2"	10	x	39	27	0.01	50.00	71199
3/4"	10	x	46	32	0.02	50.00	70965
1"- 3/4"	10	x	49	36	0.03	50.00	71200
1 1/4"- 1"	10	x	53	46	0.05	25.00	71201
1 1/2"- 1 1/4"	10	x	57	55	0.07	25.00	71202
2"- 1 1/2"	10	x	62	65	0.10	25.00	71203

### IBG® hose nozzle, spigot – male thread, PN10, grey



d-d1-G	PN	DN	I	SW	G-kg	PU	Prod.No.
14-12- 1/4"	10	8	53	15	0.01	100.00	71146
18-16- 3/8"	10	12	58	19	0.01	100.00	71147
22-20- 1/2"	10	15	76	24	0.02	100.00	71148
28-25- 3/4"	10	20	78	30	0.04	100.00	70931
34-31-1"	10	25	90	35	0.05	100.00	71150
43-40-1 1/4"	10	32	96	46	0.09	100.00	71151
53-50-1 1/2"	10	40	115	55	0.14	100.00	71152
66-60-2"	10	50	132	70	0.24	50.00	71153

### IBG® hose nozzle, spigot – male thread, PN16, grey



D-d	PN	DN	L	I	G-kg	PU	Prod.No.
10-8	16	6	12	51	0.20	100.00	71062
12-12	16	8	12	51	0.01	200.00	71063
16-16	16	10	14	57,2	0.01	200.00	70971
20-20	16	15	16	73	0.01	180.00	70972
25-25	16	20	19	79	0.02	140.00	70973
32-30	16	25	22	89	0.04	120.00	70974
40-40	16	32	26	91	0.06	120.00	70975
50-50	16	40	31	105	0.10	70.00	70976
63-60	16	50	38	116	0.14	50.00	70977

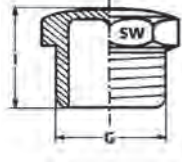
Архангельск (8182)63-90-72  
 Астана (7172)727-132  
 Астрахань (8512)99-46-04  
 Барнаул (3852)73-04-60  
 Брянск (4832)59-03-52  
 Владивосток (423)249-28-31  
 Волгоград (844)278-03-48  
 Вологда (8172)26-41-59  
 Воронеж (473)204-51-73  
 Екатеринбург (343)384-55-89  
 Иваново (4932)77-34-06

Ижевск (3412)26-03-58  
 Иркутск (395)279-98-46  
 Казань (843)206-01-48  
 Калининград (4012)72-03-81  
 Калуга (4842)92-23-67  
 Кемерово (3842)65-04-62  
 Киров (8332)68-02-04  
 Краснодар (861)203-40-90  
 Красноярск (391)204-63-61  
 Курск (4712)77-13-04  
 Липецк (4742)52-20-81  
 Киргизия (996)312-96-26-47

Магнитогорск (3519)55-03-13  
 Москва (495)268-04-70  
 Мурманск (8152)59-64-93  
 Набережные Челны (8552)20-53-41  
 Нижний Новгород (831)429-08-12  
 Новокузнецк (3843)20-46-81  
 Новосибирск (383)227-86-73  
 Омск (3812)21-46-40  
 Орел (4862)44-53-42  
 Оренбург (3532)37-68-04  
 Пенза (8412)22-31-16  
 Казахстан (772)734-952-31

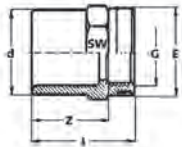
Пермь (342)205-81-47  
 Ростов-на-Дону (863)308-18-15  
 Рязань (4912)46-61-64  
 Самара (846)206-03-16  
 Санкт-Петербург (812)309-46-40  
 Саратов (845)249-38-78  
 Севастополь (8692)22-31-93  
 Симферополь (3652)67-13-56  
 Смоленск (4812)29-41-54  
 Сочи (862)225-72-31  
 Ставрополь (8652)20-65-13

Сургут (3462)77-98-35  
 Тверь (4822)63-31-35  
 Томск (3822)98-41-53  
 Тула (4872)74-02-29  
 Тюмень (3452)66-21-18  
 Ульяновск (8422)24-23-59  
 Уфа (347)229-48-12  
 Хабаровск (4212)92-98-04  
 Челябинск (351)202-03-61  
 Череповец (8202)49-02-64  
 Ярославль (4852)69-52-93



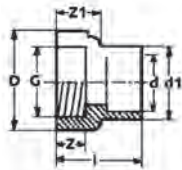
### IBG® plug, with cone shaped male thread, PN10, grey

G	PN	I	SW	G-kg	PU	Prod.No.
1/4"	10	18	17	0.01	100.00	72600
3/8"	10	21	27	0.01	100.00	71209
1/2"	10	27	24	0.01	100.00	70465
3/4"	10	29	30	0.06	100.00	70464
1"	10	32	36	0.02	100.00	71210
1 1/4"	10	36	46	0.07	100.00	71211
1 1/2"	10	37	55	0.05	100.00	71212
2"	10	42	65	0.11	100.00	71213
2 1/2"	10	41	94	0.24	10.00	72165
3"	10	43	114	0.36	10.00	72166
4"	10	46	138	0.59	10.00	72167



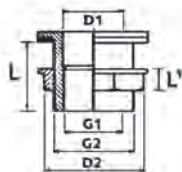
### IBG® reducing bush, solvent socket / female thread, reinforced, PN16, grey

d-G	PN	DN	I	Z	SW	E	G-kg	PU	Prod.No.
20- 3/8"	16	15	35	24	27	25	0.02	200.00	71143
25- 1/2"	16	20	43	27	32	20	0.03	130.00	70886
32- 3/4"	16	25	48	32	36	35	0.05	150.00	70885
40-1"	16	32	56	38	46	45	0.06	100.00	70884
50-1 1/4"	16	40	66	46	55	55	0.11	50.00	71144
63-1 1/2"	16	50	77	55	65	65	0.18	40.00	71145



### IBG® adapter, solvent socket/solvent spigot - female thread, reinforced, PN10, grey

d1-d-G	PN	DN	Z	Z1	I	D	G-kg	PU	Prod.No.
16/12 - 3/8"	10	10 - 8	12	15,5	33	24	0.02	50.00	71250
20/16 - 1/2"	10	15 - 10	15	20	34	28	0.02	100.00	71251
25/20 - 3/4"	10	20 - 15	16,3	21,9	38	34,6	0.03	100.00	71252
32/25 - 1"	10	25 - 20	19,1	26,4	45,5	44	0.10	50.00	71253
40/32 - 1 1/4"	10	32 - 25	21,4	31,4	54	55	0.08	40.00	71254
50/40 - 1 1/2"	10	40 - 32	21,4	32,2	59,5	63	0.12	30.00	71255
63/50 - 2"	10	50 - 40	25,7	39,2	71,5	77,5	0.50	30.00	70035



### IBG® tank adapter, male-/female thread, ring - CSM, grey

D1	G1	L	G2	L1	D2	G-kg	PU	Prod.No.
16	3/8"	35	3/4"	13	32	0.03	50.00	71155
20	1/2"	36	1"	15	41	0.07	50.00	71156
20	3/4"	36	1"	15	41	0.10	50.00	71157
25	1"	50	1 1/4"	18	55	0.14	50.00	70920
40	1 1/2"	64	2"	20	80	0.27	25.00	71158
63	2"	68	2 3/4"	23	100	0.25	5.00	71164



### IBG® tank adapter, male-/female thread, ring - Viton, grey

D1	G1	L	G2	L1	D2	G-kg	PU	Prod.No.
16	3/8"	35	3/4"	13	32	0.03	5.00	71160
20	1/2"	36	1"	15	41	0.06	5.00	71161
20	3/4"	36	1"	15	41	0.10	5.00	71162
25	1"	50	1 1/4"	18	55	0.11	5.00	71163
40	1 1/2"	64	2"	20	80	0.25	5.00	71164
63	2"	68	2 3/4"	23	100	0.43	5.00	71165



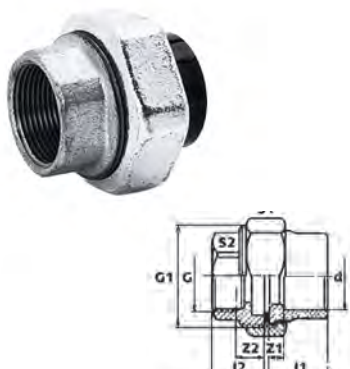
### IBG® tank adapter solvent socket/solvent spigot - BSP male thread sealing rings EPDM and polyamide, grea

d	d2	d3	Z1	C	D	G-kg	PU	Prod.No.
20	25	3/4"	13	19	42	0.04	50.00	73413
25	32	1"	15	22	45	0.07	50.00	73414
32	40	1 1/4"	17	26	47	0.12	50.00	73415
40	50	1 3/4"	19	31	48	0.21	50.00	73416
50	63	2"	21	38	52	0.26	45.00	73417
50	63	2 1/4"	21	38	52	0.34	45.00	73418
63	75	2 1/2"	23	44	53	0.38	24.00	73419
75	90	3"	36	51	56	0.58	21.00	73420
90	110	M113	32	61	62	1.14	10.00	73421
110	125	M133	36	69	66	1.55	10.00	73422



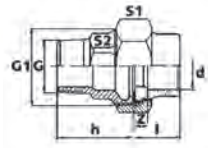
### IBG® tank adapter solvent socket - BSP male/female thread, sealing rings EPDM and polyamide, grey

d1	d2	d3	Z1	C	D	G-kg	PU	Prod.No.
20	3/4"	3/4"	13	17	42	0.05	10.00	73404
25	1"	1"	15	21	45	0.07	10.00	73405
32	1 1/4"	1 1/4"	17	23	47	0.13	10.00	73406
40	1 1/2"	1 3/4"	19	23	48	0.20	10.00	73407
50	2"	2 1/4"	21	27	52	0.31	10.00	73409
63	2 1/2"	2 1/2"	23	31	53	0.38	10.00	73410
75	3"	3"	36	34	56	0.56	10.00	73411
90	4"	M113	32	40	62	1.03	10.00	73412



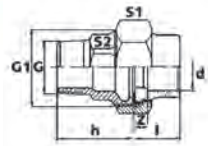
### IBG® adapter union, PVC/GTW galvanized, solvent socket - female thread, PN16

d-G	PN	DN	G1	I1	I2	Z2	S1	S2	G-kg	PU	Prod.No.
20 - 1/2"	16	15	1"	19	20	5	37	27	0.09	40.00	71167
25 - 3/4"	16	20	1 1/4"	22	25	6	46	32	0.23	10.00	71168
32 - 1"	16	25	1 1/2"	25	28	6	52	38	0.30	10.00	71169
40 - 1 1/4"	16	32	2"	29	31	7	64	47	0.53	10.00	71170
50 - 1 1/2"	16	40	2 1/4"	34	34	7	72	53	0.54	10.00	71171
63 - 2"	16	50	2 3/4"	41	38	8	89	65	0.87	10.00	71172



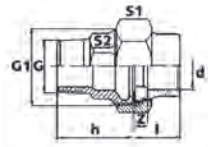
### IBG® adapter union, PVC/GTW galvanized, solvent socket – male thread, PN16

Produkt	PN	DN	G1	h	L	z	S1	S2	G-kg	PU	Prod.No.
20 - 1/2"	16	15	1"	40	19	5	37	23	0.15	10.00	71174
25 - 3/4"	16	20	1 1/4"	40	22	6	46	27	0.29	10.00	71175
32 - 1"	16	25	1 1/2"	50	25	6	52	38	0.33	10.00	71176
40 - 1 1/4"	16	32	2"	50	29	7	64	44	0.66	10.00	71177
50 - 1 1/2"	16	40	2 1/4"	65	34	7	72	53	0.72	10.00	71178
63 - 2"	16	50	2 3/4"	61	41	8	89	62	1.19	10.00	71179



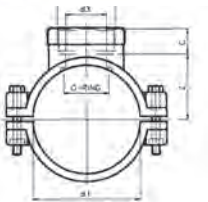
### IBG® adapter union, PVC/gun metal (rg5), solvent socket – male thread, PN16

d-G	PN	DN	G1	h	l	z	S1	S2	G-kg	PU	Prod.No.
16 - 3/8"	16	10	3/4"	22	17	5	30	28	0.11	10.00	71187
20 - 1/2"	16	15	1"	25	19	5	37	38	0.13	40.00	71188
25 - 3/4"	16	20	1 1/4"	27	22	6	46	44	0.20	25.00	71189
32 - 1"	16	25	1 1/2"	54	25	6	52	53	0.31	10.00	71190
40 - 1 1/4"	16	32	2"	54	29	7	64	62	0.50	10.00	71191
50 - 1 1/2"	16	40	2 1/4"	62	34	7	72	80	0.64	10.00	70990
63 - 2"	16	50	2 3/4"	69	41	8	89	61	1.07	10.00	71192



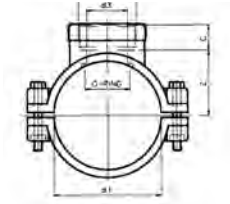
### IBG® adapter union, PVC/gun metal (rg5), solvent socket – female thread

d-G	PN	DN	G1	I1	I2	Z1	Z2	S1	S2	G-kg	PU	Prod. No.
16 - 3/8"	16	10	3/4"	17	22	5	7	30	22	0.01	40.00	71180
20 - 1/2"	16	15	1"	19	22	5	7	37	26	0.15	40.00	71181
25 - 3/4"	16	20	1 1/4"	22	27	6	8	46	30	0.18	25.00	71182
32 - 1"	16	25	1 1/2"	25	29,5	6	9	52	40	0.25	18.00	71183
40 - 1 1/4"	16	32	2"	29	33	7	9	64	50	0.41	10.00	71184
50 - 1 1/2"	16	40	2 1/4"	34	36	7	10	72	53	0.53	18.00	71185
63 - 2"	16	52	2 3/4"	41	42	8	10	89	65	0.83	12.00	71186



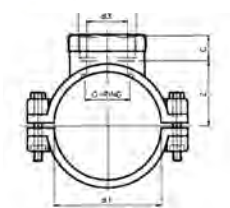
### IBG® clamp saddle type A, pipe female thread with stainless steel ring

d1-d2	d3	Z	C	D	E	G-kg	PU	Prod.No.
20 - 1/2"	10	16	18	2	2	0.11	100.00	73423
25 - 1/2"	12	19	18	2	2	0.12	100.00	73424
32 - 1/2"	14	23	18	2	2	0.15	100.00	73425
32 - 3/4"	18	23	19	2	2	0.16	100.00	73426
32 - 1"	23	23	22	2	2	0.17	100.00	73427
40 - 1/2"	14	27	18	4	4	0.22	80.00	73428
40 - 3/4"	18	27	19	4	4	0.22	80.00	73429
40 - 1"	23	27	22	4	4	0.23	80.00	73430
50 - 1/2"	14	32	18	4	4	0.25	60.00	73431
50 - 3/4"	18	32	19	4	4	0.25	60.00	73432
50 - 1"	23	32	22	4	4	0.26	60.00	73433
50 - 1 1/4"	26	32	24	4	4	0.28	60.00	73434



### IBG® clamp saddle type B, pipe female thread with stainless steel ring

d1-d2	d3	Z	C	D	E	G-kg	PU	Prod.No.
63 - 1/2"	14	39	18	4	4	0.29	40.00	71950
63 - 3/4"	18	39	19	4	4	0.30	40.00	73436
63 - 1"	23	39	22	4	4	0.30	40.00	73437
63 - 1 1/4"	26	39	24	4	4	0.33	30.00	73438
63 - 1 1/2"	33	39	24	4	4	0.33	30.00	73439
75 - 1/2"	14	46	18	6	4	0.41	25.00	73440
75 - 3/4"	18	46	19	6	4	0.42	25.00	73441
75 - 1"	23	46	22	6	4	0.42	25.00	73442
75 - 1 1/4"	26	46	24	6	4	0.44	25.00	73443
75 - 1 1/2"	33	46	24	6	4	0.45	25.00	73444
90 - 1/2"	14	53	18	6	4	0.46	25.00	73445
90 - 3/4"	18	53	19	6	4	0.46	25.00	73447
90 - 1"	23	53	22	6	4	0.47	25.00	73448
90 - 1 1/4"	26	53	24	6	4	0.48	25.00	73449
90 - 1 1/2"	33	53	28	6	4	0.49	25.00	70915
90 - 2"	42	53	22	6	4	0.52	25.00	73451
110 - 1"	23	64	22	6	4	0.58	20.00	73452
110 - 1 1/4"	26	64	24	6	4	0.59	20.00	73453
110 - 1 1/2"	33	64	24	6	4	0.60	20.00	73454
110 - 2"	42	64	28	6	4	0.63	20.00	73455
110 - 2 1/2"	60	64	33	6	4	0.67	20.00	73456
125 - 1"	23	71	22	6	4	0.64	15.00	73457
125 - 1 1/4"	26	71	24	6	4	0.65	15.00	73458
125 - 1 1/2"	33	71	24	6	4	0.66	15.00	73459
125 - 2"	42	71	28	6	4	0.70	15.00	73460
125 - 2 1/2"	60	71	33	6	4	0.72	15.00	73461



### IBG® clamp saddle type C, pipe female thread with stainless steel ring

d1-d2	d3	Z	C	D	E	B-kg	VE	Prod.No.
140 - 1 1/4"	26	80	24	6	6	0.87	10.00	75826
140 - 1 1/2"	35	80	26	6	6	1.00	1.00	73462
140 - 2"	42	80	28	6	6	0.91	10.00	73463
140 - 2 1/2"	60	80	33	6	6	0.94	10.00	73464
160 - 1"	23	90	33	6	6	1.00	10.00	73465
160 - 1 1/4"	26	90	24	6	6	1.01	10.00	73466
160 - 1 1/2"	33	90	24	6	6	1.01	10.00	73467
160 - 2"	42	90	28	6	6	1.03	10.00	73468
160 - 2 1/2"	60	94	33	6	6	1.07	10.00	73469
160 - 3"	76	94	36	6	6	1.16	10.00	73470



## IBG® FlexFit® adapter unions, clamp – solvent spigot

d-d1	DN	L	E	L1	L2	E	G-kg	PU	Prod.No.
50 × 50	40	104,5	42	31,5	69	89	0.22	30.00	71736A
50 × 11/2"	40	104,5	42	31,5	69	89	0.22	30.00	76488A
63 × 63	50	121,5	55	38,5	79	108	0.38	25.00	71905A
2"	50	121,5	55	38,5	79	108	0.38	25.00	76338A



## IBG® FlexFit® adapter unions, clamp – solvent socket

d-d2	DN	L	E	L1	L2	E1	G-kg	PU	Prod.No.
50 × 50	40	103,5	58	31,5	69	89	0.22	24.00	71737A
50 × 11/2"	40	103,5	58	31,5	69	89	0.23	24.00	76489A
63 × 63	50	120,5	71,6	38,5	79	108	0.37	25.00	71906A
63 × 2"	50	120,5	71,6	38,5	79	108	0.38	24.00	76339A



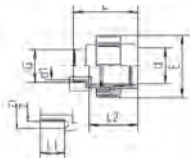
## IBG® FlexFit® adapter unions, BSP, clamp – female thread

d-G	DN	L	E	L1	L2	E1	G-kg	PU	Prod.No.
50 × 11/2"	40	103,5	58	31,5	69	89	0.24	24.00	71740A
63 × 2"	50	120,5	72	27,5	79	108	0.40	25.00	71911A



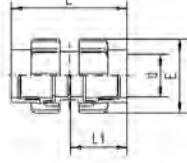
## IBG® FlexFit® adapter unions, BSP, clamp – male thread + O-ring

d-G	Type	DN	d1	L	E	L1	L2	Z	Z1	G-kg	PU	Prod.No.
50 × 11/2"	A	40	39	90,8	89	18	69	48	58	0.22	25.00	71739A
50 × 2"	B	40	49	189,4	108	23	69	60	69	0.28	24.00	71904A
63 × 2"	A	50	49	109,4	89	23	79	60	69	0.37	36.00	71910A



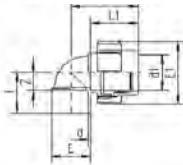
## IBG® FlexFit® adapter unions, NPT

d-G	Type	DN	d1	L	E	L1	L2	Z	Z1	G-kg	PU	Prod.No.
50 × 11/2"	A	40	39	90,8	89	18	69	48	58	0.23	25.00	76492



### IBG® FlexFit® double union, clamp – clamp

d-d1	DN	L	E	L1	G-kg	PU	Prod.No.
50 × 50	40	142	89	69	0.40	20.00	71738A
63 × 63	50	162,5	108	79	0.65	20.00	71907A



### IBG® FlexFit® adapter elbow 90°, clamp – solvent socket

d-d1	DN	I	L	E	L1	E1	Z	G-kg	PU	Prod.No.
50 × 50	40	57,5	97	56	69	89	26	0.25	25.00	71741A
50 × 1 1/2"	40	57,5	97	56	69	89	26	0.25	25.00	76493A
63 × 63	50	71	119	72	79	108	32,5	0.48	25.00	71908A
63 × 2"	50	71	119	72	79	108	32,5	0.45	25.00	76340A



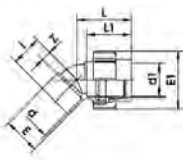
### IBG® FlexFit® adapter elbow 90°, clamp – female thread

d-G	DN	I	L	E	L1	E1	Z	G-kg	PU	Prod.No.
50 × 1 1/2" IG	40	57,5	97	56	69	89	26	0.25	25.00	76496
63 × 2" IG	50	71	119	72	79	108	32,5	0.46	25.00	76343A



### IBG® FlexFit® adapter elbow 90°, BSP, clamp – male thread

d-G	DN	d1	L	E	L1	L2	L3	G-kg	PU	Prod.No.
50 × 1 1/2"	40	36	94,5	89	85	63	69	0.28	25.00	71903A
63 × 2"	50	48	119	108	85	56,3	79	0.63	25.00	76600A



### IBG® FlexFit® adapter elbow 45°, BSP, clamp – solvent socket

d-d1	DN	I	L	E	L1	E1	Z	G-kg	PU	Prod.No.
50 × 50	40	46,5	84	56,3	69	89	15	0.25	25.00	73506A



### IBG® FlexFit® elbow 90° , clamp – clamp

d-d1	DN	I	L	E	G-kg	PU	Prod.No.
50 × 50	40	105,5	69	89	0.43	10.00	71742A
63 × 63	50	124	79	108	0.73	10.00	71909A



### IBG® FlexFit® adapter tee 90° , clamp – solvent socket

Produkt	DN	I	L	E	L1	E1	Z	G-kg	PU	Prod.No.
50 × 50 × 50	40	57,5	9,7	56	69	89	26	0.27	18.00	71743A
1 1/2" × 50 × 1 1/2"	40	57,5	9,7	56	69	89	26	0.03	18.00	73402
63 × 63 × 63	50	71	119	71,6	79	108	32	0.57	16.00	71912A
2" × 63 × 2"	50	71	119	71,6	79	108	32	0.03	18.00	73403



### IBG® FlexFit® adapter tee 90° , clamp – clamp

d-d1-d2	DN	I	L	E	G-kg	PU	Prod.No.
50 × 50 × 50	40	105,5	69	89	0.64	8.00	71744A
63 × 63 × 63	50	124	79	108	1.08	10.00	71913A
50 × 63 × 50	40/50	105,5	69	89	0.79	8.00	76787A



### IBG® FlexFit® adapter tee 90° , clamp – solvent socket

Produkt	DN	I	L	E	L1	E1	Z	G-kg	PU	Prod.No.
50 × 63 × 50	40/50	105,5	69	89	79,8	71,6	41,3	0.63	8.00	76788A

Архангельск (8182)63-90-72  
 Астана (7172)727-132  
 Астрахань (8512)99-46-04  
 Барнаул (3852)73-04-60  
 Белгород (4722)40-23-64  
 Брянск (4832)59-03-52  
 Владивосток (423)249-28-31  
 Волгоград (844)278-03-48  
 Вологда (8172)26-41-59  
 Воронеж (473)204-51-73  
 Екатеринбург (343)384-55-89  
 Иваново (4932)77-34-06

Ижевск (3412)26-03-58  
 Иркутск (395)279-98-46  
 Казань (843)206-01-48  
 Калининград (4012)72-03-81  
 Калуга (4842)92-23-67  
 Кемерово (3842)65-04-62  
 Киров (8332)68-02-04  
 Краснодар (861)203-40-90  
 Красноярск (391)204-63-61  
 Курск (4712)77-13-04  
 Липецк (4742)52-20-81  
 Киргизия (996)312-96-26-47

Магнитогорск (3519)55-03-13  
 Москва (495)268-04-70  
 Мурманск (8152)59-64-93  
 Набережные Челны (8552)20-53-41  
 Нижний Новгород (831)429-08-12  
 Новокузнецк (3843)20-46-81  
 Новосибирск (383)227-86-73  
 Омск (3812)21-46-40  
 Орел (4862)44-53-42  
 Оренбург (3532)37-68-04  
 Пенза (8412)22-31-16  
 Казахстан (772)734-952-31

Пермь (342)205-81-47  
 Ростов-на-Дону (863)308-18-15  
 Рязань (4912)46-61-64  
 Самара (846)206-03-16  
 Санкт-Петербург (812)309-46-40  
 Саратов (845)249-38-78  
 Севастополь (8692)22-31-93  
 Симферополь (3652)67-13-56  
 Смоленск (4812)29-41-54  
 Сочи (862)225-72-31  
 Ставрополь (8652)20-65-13

Сургут (3462)77-98-35  
 Тверь (4822)63-31-35  
 Томск (3822)98-41-53  
 Тула (4872)74-02-29  
 Тюмень (3452)66-21-18  
 Ульяновск (8422)24-23-59  
 Уфа (347)229-48-12  
 Хабаровск (4212)92-98-04  
 Челябинск (351)202-03-61  
 Череповец (8202)49-02-64  
 Ярославль (4852)69-52-93